

JUL  
08

THURSDAY

9.30AM

**Ladies Golf** Beijing's avid lady golfers play weekly at a local course. RMB 290 (includes green fees, caddy and lunch). Tee-off time is 9.30am. Details at [beijingladiesgolf@yahoo.com](mailto:beijingladiesgolf@yahoo.com) or [www.beijingladiesgolf.org](http://www.beijingladiesgolf.org)

6PM

**Wine Club** Discover some of the world's finest wine regions. Five wines and one cocktail accompanied by expert commentary and canapes. RMB 150+15% per person. One East. 2/F, Hilton Beijing, 1 Dongfang Lu, Chaoyang District. (5865 5030) 朝阳区东方路1号希尔顿酒店2层

**Mediterranean Buffet** Savor food from Spain, Italy, Greece and North Africa, paired with wines from the region. RMB 188+15%. Coffee Garden, Shangri-La's Kerry Centre Hotel. 1 Guanghua Lu, Chaoyang District. (8565 2188) 朝阳区光华路1号嘉里中心饭店

6-10PM

**Bodega Fever** Fill up on as much tapas as you can from Scarlett's wide-ranging selection. Scarlett. Hotel G, 7A Gongti Xilu, Chaoyang District. (6552 2880) 朝阳区工体西路甲7号北京极线内

7.15PM

**Beijing Devils Training** Rugby training out at Dulwich Legend Gardens, Shunyi. Free bus leaves The Den at 7.15pm. The Den. 4 Gongti Donglu (next to City Hotel's main entrance), Chaoyang District. (6592 6290) 敦煌. 朝阳区工体东路4号城市宾馆正门旁边

7.30 & 9PM

**Samba Beginners** Beginner's class on every Thursday by native Brazilian and professional dancer and fitness instructor Renata Secco who has over 10 years of performing and teaching experience in Brazil, USA and Asia. RME 80 per lesson. J-Ballet Studio. 1/F, Bldg D, Jingxiu Yuan, Xingfucun Zhonglu, Chaoyang District. (8453 3003) 朝阳区幸福村中路景绣园D座1层

8.30PM

**Paddy's Networking Thursdays** Work your contacts. Free. Paddy



Wine Club at Hilton

O'Shea's. 28 Dongzhimenwai Dajie, Chaoyang District. (6415 6389) 朝阳区东直门外大街28号

9PM

**Live Music: Yugong Yishan Big Band** In-house band offer a treat. Free. Yugong Yishan. 2-3 Zhang Zizhong Lu (former Duan Qirui government building, east of Ping'an Dadao), Dongcheng District. (6404 2711) 愚公移山. 东城区张自忠路2-3号段祺瑞政府旧址西院

**Live Music: Dress Code Quintet** French jazz musicians sneak into Dongmianhua Hutong. RMB 40, RMB 30 (advance). Jianghu Liveshow Bar. 7 Dongmianhua Hutong, Jiadaokou Nandajie, Dongcheng District. (6401 4611) 江湖酒吧. 东城区交道口南大街东棉花胡同7号

**Exposed: Ladies' Night** Free VnC cocktails and second-floor "girls-only" zone. Free. Zeta Bar. 2/F, Hilton Beijing, Dongfang Lu, Dongsanhuan Lu, Chaoyang District. (5865 5000) 颐达吧. 朝阳区东三环北路东方1号希尔顿饭店2层

**Ladies Night** All cocktails free for ladies. Juicy spot. 2-3/F, 2 Chaoyang Xilu (30m south of Chaoyang Park West Gate), Chaoyang District. (6593 0610) 朝阳区朝阳公园西路2号楼2-3层 (朝阳公园西门往南30米)

**Beer for Queer** Buy-one-get-one-free for the LGBT community. Free. The Boat. 8 Liangmahe Nanlu (west of Sanlitun Beijie), Chaoyang District.

(8468 0735) 朝阳区亮马河南路8号 (三里屯北街西边)

**Give Me Goose** Buy-one-get-one-free on bottles of Grey Goose. Free. Bling. Solana 5-1, 6 Chaoyang Gongyuan Lu, Chaoyang District. (5905 6999) 朝阳区朝阳公园路6号Solana蓝色港湾国际商区5-1

**33 45 Underground Disco Project** Yang Bing and a rotating crop of DJ talent keep the ladies happy. The buy-one-get-two-free drinks deal keeps them happier. Free. White Rabbit. 2/F, Tongli Studios, Sanlitun Beilu, Chaoyang District. (no tel) 朝阳区三里屯北路同里2层

9.30PM

**Liu Yue Guitar Trio** Jazz lines read by classic guitar. Free. East Shore Live Jazz Café. 2 Qianhai Nanyanlu (just to the west of the post office on Di'anmenwai Dajie), Xicheng District. (8403 2131) 东岸咖啡. 西城区地安门外大街前海南沿2号楼2层

**Gayographic Happy Hour** Two-for-one drink specials until midnight and a free Thai tapas buffet for early birds at Lantung's "pink" happy hour. Free. Lantung. Solana, 6 Chaoyang Gongyuan Lu, Chaoyang District. (5905 6213) 兰棠. 朝阳区朝阳公园路6号蓝色港湾国际商区

10PM

**Girls' Night Out** Free vodka drinks from 10pm-1am for the ladies. Free. Xiu. Park Hyatt, 2 Jianguomenwai Dajie, Chaoyang District. (5867 1108) 秀. 朝阳区朝阳区建国门外大街2号

JUL  
09

FRIDAY

10AM

### Half-day Great Wall Hiking

A half-day hike on the Mutiaynu Great Wall. RMB 420. Meet 10-11.30am. Call Lisa on 139 1150 8227 or 8621 6278 for more information. CnAdventure. www.cnadventure.com

6PM

**Thank Funk It's Friday** Half-price drinks from 6-9pm. Free. Zeta Bar. 2/F, Hilton Beijing, Dongfang Lu, Dongsanhuan Beilu, Chaoyang District. (5865 5000) 颐达吧, 朝阳区东三环北路东方1号希尔顿饭店2层

6.45PM

**The Great Wall Adventure Bicycle Challenge** A three day ride north of Beijing. For those who can't join on Friday can catch up on Saturday but the cost would be the same. RMB 1,550 including food, water, lodging. Register at Chinacharitychallenge@gmail.com. Maximum 18 participants. Meeting point at TREK Store at 6.45am.

6-10PM

**Thank God it's Friday** All standard drinks for RMB 25. TGIF Coupons are on sale buy 5 coupons and get the 6th drink for free! Coupons can be used every Friday. Scarlett. Hotel G, 7A

Gongti Xilu, Chaoyang District. (6552 2880) 朝阳区工体西路甲7号北京极线内

7.30PM

**Live Music: Liu Dongming, Wan Xiaoli, Lao Lang** Liu Dongming performs, Wan Xiaoli goes mad, Lao Lang keeps it cool – folk power. Tickets at 400 810 3721. RMB 120-380. No. 46 Theater, 46 Fangjia Hutong (just south of Guozhijian Jie), Dongcheng District. (8403 3799) 46号剧场, 东城区方家胡同46号艺术园区(国子监南临)

8PM

**Live Music: Jay-Jay Johanson, Silkfloss** Swedish trip-hop character stirs your mood with local electronic candies. RMB 200, RMB 150 (advance). Yugong Yishan. 2-3 Zhang Zizhong Lu (former Duan Qirui government building, east of Ping'an Dadao), Dongcheng District. (6404 2711) 愚公移山, 东城区张自忠路2-3号段祺瑞执政政府旧址西院

**Live Music: Skarving** Extra brass from the big ska band. RMB 80-120, RMB 50 (students). Tickets at 8599 1188. Nine Theater, Chaoyang Culture Center. Corner of Jintai Xilu and Chaoyangmenwai Dajie (east of Jingguang Qiao), Chaoyang District. (8599 6011) 朝阳文化馆, 朝阳区朝阳门外大街和金太西路的路口

**Free Keg Night** The first keg of beer is free. By the time it's done, you'll be ready for happy hour. Free. Pyro. B1/F, Bldg 12, Huaqing Jiayuan, Wudaokou (5 min from Wudaokou subway station), Haidian District. (8286 6240) 海淀区五道口华清嘉园12号楼地下1层

**Friday Wine Fever** Free-flow tapas when you buy an RMB 200 bottle of wine. Free. Enoteca. The Place, 9 Guanghua Lu, Chaoyang District. (6587 1578) 朝阳区光华路9号世贸天阶

9PM

**House of Decadence** By Sigma. DJ Chozie & DJ Bobby spin sophisticated house music for the Beijing elite. Free. The Beach. Block 8, Apartment 8 Complex, Chaoyang Gongyuan Xilu, Chaoyang District. (135 2188 2889) 朝阳区朝阳公园西路8号公馆

**Live Music: Abigail Washburn & Friends** The country girl reunites with members of Hanggai and other local traditional instrumentalists. RMB 100, RMB 80 (advance). The One. 5 Good Loft, 19 Ganluyuan, Gaobeidian Beilu (inside 718 Gudi Media Culture Garden), Chaoyang District. (5914 8087) 朝阳区高碑店北路甘露园19号院5号楼(718谷地传媒文化园内)

**Live Music: Long Shen Dao, Ember Swift & Band** Reggae goes acoustic with a joint force from Canada. RMB 50, RMB 40 (advance, students). Jianghu Liveshow Bar. 7 Dongmianhua Hutong, Jiaodaokou Nandajie, Dongcheng District. (6401 4611) 江湖酒吧, 东城区交道口南大街东棉花胡同7号

**Live Music: Misandao** The Chinese skinheads grow ten years young – that's older than the Pistols. RMB 50. MAO Livehouse. 111 Gulou Dongdajie, Dongcheng District. (6402 5080) 光芒, 东城区鼓楼东大街111号

10PM

### Bigger Bang, Old Fashion, Rubber

**Phonograph Needle** Old-school punk boys share stage with Talking Heads followers and disco rockers. RMB 40, RMB 30 (students). D-22. 242 Chengfu Lu, Haidian District. (6265 3177) 海淀区成府路242号

**'80s Night** Like the '80s but with less mullets. DJs Side B, The Spinster, Vinyl Richie and Sweet FA spin. Free. Alfa. 6 Xingfu Yicun (in the alley opposite the north gate of Workers' Stadium), Chaoyang District. (6413 0086) 阿尔法, 朝阳区幸福一村6号工体北门对面的胡同里

**Basement** Two-for-one drinks specials until midnight. Free. Punk. B1/F, The Opposite House, Bldg 1, The Village at Sanlitun, 11 Sanlitun Lu, Chaoyang District. (6410 5222) 朝阳区三里屯路11号三里屯Village1号楼瑜舍地下1层



Abigail Washburn performs at The One

# JUL 10 SATURDAY

— 8AM —

**Migrating Birds Island Trip** A back-to-nature experience on a Bohai Bay island. See migrating birds and take part in an ecological treasure hunt. Meet in front of McDonald's at Ginza Mall (southeast corner of Dongzhimen Qiao). RMB 890, RMB 790 (children under 16). Ninety Percent Travel (151 1791 6648) www.90percenttravel.com

— 11AM —

**Trap-Neuter-Return** A workshop on effectively managing the stray cat population. Free. International Center for Veterinary Services. Kent Center, 29 Liangmaqiao Lu, Anjialou (shares a courtyard with China Culture Center), Chaoyang District. (8456 1939/40) 北京新天地国际动物医院, 朝阳区安家楼亮马桥路29号青特中心院子内

— 3PM —

**Live Music: Waqiyige** Yi folk songs from the southwestern mountains performed in chorus. RMB 100, RMB 80 (advance). The One. 5 Good Loft, 19 Ganluyuan, Gaobeidian Beilu (inside 718 Gudi Media Culture Garden), Chaoyang District. (5914 8087) 朝阳区高碑店北路甘露园19号院5号楼(718谷地传媒文化园内)

— 3-5PM —

**Gaelic Football** Beijing Gaelic Football Club play men's and women's games every Sunday; all skill levels are welcome. beijinggaa@yahoo.com or visit www.beijinggaa.org. Western Academy of Beijing, 10 Laiguangying Donglu (off the Airport Expressway), Chaoyang District. (8456 4155) 北京京西学校, 朝阳区来广营东路10号

— 5.30-10PM —

**Garden BBQ** Dine on a menu of savory grilled fare like fresh rock lobster, tiger prawns and juicy T-bone steak, as well as cheeses, soft drinks and local beer in the Shangri-La Hotel's traditional Chinese garden. RMB 498. Garden Bar & Terrace, Shangri-La Hotel, 29 Zizhuyuan Lu, at Xisanhuan Lu, Haidian District. (6841 2211) 北京香格里拉饭店, 海淀区西三环紫竹院路29号

— 6PM —

**Live Music: Demerit** Punk mainstays bring "Tongzhou Generation" back to



Jets Overhead at 2 Kolegas

their home. RMB 20. Raying Temple. East End of Qunfang Zhongyi Jie (West Gate of Yucai Middle School), Liyuan Town, Tongzhou District. (137 1698 0276) 小雷音俱乐部, 通州区梨园镇群芳中一街东首(育才学校西门)

— 7PM —

**Yipak Rock Feast** Featuring Askar and Greywolf on the grass of Lido Park, plus beer and BBQ. RMB 40, 20 (students). Lido Park. 6 Fangyuan Xilu, Chaoyang District. 丽都公园, 朝阳区芳园西路6号

— 7.30PM —

**Sandee Peng, Zhong Lifeng, Shao Xiaomao** The folk session continues with piano and guitar ballads. Tickets at 400 810 3721. RMB 120-380. No.46 Theater. 46 Fangjia Hutong (just south of Guozhijian Jie), Dongcheng District. (8403 3799) 46号剧场, 东城区方家胡同46号艺术园区(国子监南临)

— 8PM —

**DJ Party: Hector Fonseca** House for alternative minds. RMB 100 (includes one drink), RMB 40 (students, before 10pm). Destination. 7 Gongti Xilu, Chaoyang District. (6552 8180) 目的地, 朝阳区工体西路7号

**Hummingbird** Salsa from Xinjiang. Tickets at 8599 1188. RMB 80-120, RMB 50 (students). Nine Theater, Chaoyang Culture Center. Corner of Jintai Xilu and Chaoyangmenwai Dajie (east of Jinguang Qiao), Chaoyang District. (8599 6011) 朝阳文化馆, 朝阳区朝阳门外大街和金太西路路口

— 9PM —

**Live Music: Jets Overhead** Following their 2009 China Tour Canadian rock quintet Jets Overhead return to China again. RMB 40. 2 Kolegas. 21 Liang-

maqiao Lu (inside the drive-in movie theater park), Chaoyang District. (6436 8998) 两个好朋友, 朝阳区亮马桥路21号

**I Don't Do Him, I Do G** Free-flow on selected cocktails and wine. But only for ladies. Free. Scarlett. Hotel G, 7A Gongti Xilu, Chaoyang District. (6552 2880) 朝阳区工体西路甲7号北京极线内

**Early Bus** Ska in the mood for dance. RMB 30. Hot Cat Club. 46 Fangjia Hutong (just south of Guozhijian Jie), Dongcheng District. (6400 7868) 东城区方家胡同46号艺术园区

— 10PM —

**Live Music: Boyz & Girl, Birdstricking, Hot & Cold** Taiwanese noise-rock hipsters welcomed by local similar minds. Word has it that Carcass Cars might make an appearance. RMB 40, RMB 30 (students). D-22. 242 Chengfu Lu, Haidian District. (6265 3177) 海淀区成府路242号

— TIMES VARY —

**International Finger-Style Guitar Festival** Acoustic guitar recitals performed by musicians from different countries. Tickets at 6406 8888. RMB 20-150 (per session). 2.30-5.15pm (afternoon session), 7-9.45pm (evening session). Peking University Hall. Inside Peking University, 75 Haidian Lu, Haidian District. (6275 1278) 北大百年纪念礼堂, 海淀区海淀路75号北京大学内

**Shanren** Yunnan folkies lighten Shuangjing with soft chorus and indie rock. Price and time TBD. Mako Live House. Inside Hongdian Art Factory, Courtyard 36 (500m south of Carrefour Shuangjing, inside small alley), Guangqu Lu, Chaoyang District. (5205 1112/3) 麻雀, 朝阳区广渠路36号院红点艺术工厂内(幸福贝员南边)

# JUL 11

## SUNDAY

11.30AM

**Poolside BBQ Buffet** Swim, eat and drink to your heart's content. Double-tree by Hilton Beijing Pool. RMB 158. 11.30am-4.30pm. 168 Guang'anmen Waidajie, Xuanwu District. (6338 1888) 宣武区广安门内大街168号

2 & 8PM

**THRILLER - LIVE** It is a spectacular concert created to celebrate the career of the world's greatest entertainer - Michael Jackson. Moonwalking its way around the world, THRILLER - LIVE brings to life the sensational dancing and distinctive sound of Michael and the Jackson 5. With eye-popping multi-media effects and dazzling choreography by the shows award-winning director Gary Lloyd. Expect your favourite Jackson songs delivered by an exceptionally talented cast and live band for more than two hours, including the smash hits: I Want You Back, I'll Be There, Can You Feel It, Beat It. RMB 280-880. Tickets at 400 610 3721. Beijing Exhibition Theater. 135 Xizhimenwai Dajie, Xicheng District. (6835 4455) 北京展览馆剧场, 西城区西直门外大街135号

3PM

**American Football** The only American football group in Beijing play flag football for weekend fun. Contact

Yoyao Hsueh at yoyaoh@gmail.com or 159 0120 2499. Chaoyang Park

4PM

**Sundays on Top** Rooftop drink specials, burgers and hot dogs, with music from DJ Wordy and Doc J. Free. Kokomo. 4/F Tongli Studios, Sanlitun Houjie, Chaoyang District. (6413 1019) 朝阳区三里屯后街同里4层

4-6PM

**INTRO Workshops** Learn about DJing, VJing and producing electronic music. Free. Lantern. B1/F, 3.3 Shopping Center, 33 Sanlitun Beilu, Chaoyang District. (135 0134 8785) 朝阳区三里屯北路33号3.3服饰大厦地下1层

4-10PM

**Weekend Happy Hour** Climb up to Lantung's Moon Deck roof terrace for early evening chilling with a hookah and a view. RMB 100 for all-you-can-drink cocktail specialties, including fresh fruit shakes with rum or vodka and Lantung's specialty infused vodka mojitos. All-you-can-drink fresh tropical shakes are RMB 80. Lantung. Solana, 6 Chaoyang Gongyuan Lu, Chaoyang District. (5905 6213) 兰棠, 朝阳区朝阳公园路6号蓝色港湾国际商务区

5.30 & 7PM

**Samba Intermediates** Intermediate class on every Sunday by native Brazilian and professional dancer and fitness instructor Renata Secco who has over 10 years of performing and teaching experience in Brazil, USA and Asia. RME 80 per lesson. J-Ballet Studio. 1/F, Bldg D, Jingxiu Yuan, Xingfucun

Zhonglu, Chaoyang District. (8453 3003) 朝阳区幸福村中路景绣园D座1层

7 PM

**Chamber Music: China National Symphony Orchestra String Quartet** The quartet plans to dazzle audiences with a Schubert and Beethoven tribute concert. Details at www.pku-hall.com. RMB 40-50. Peking University Hall. Inside Peking University, 75 Haidian Lu, Haidian District. (6275 1278) 北大百年纪念礼堂, 海淀区海淀路75号北京大学内

7.30 PM

**Piano Concert: Garrick Ohlsson's Chopin Recital** Ohlsson, the first American to win the Chopin International Piano Competition winner, has established himself worldwide as a musician of magisterial interpretive and technical prowess. To celebrate the 200th anniversary of Chopin's birth, his recital will include the Impromptu in F sharp major, Ballade in A flat, Fantasie in F minor, and Mazurka in A minor, to name only a few. RMB 100-400. NCPA. 2 Chang'an Jie, Xicheng District. (6655 0000) 国家大剧院, 西城区西长安街2号

8PM

**Live Concert: Usher** Mr. Raymond IV brings his confession to Beijing, with a new album. Tickets at 400 610 3721 or www.piao.com.cn. RMB 280-2,000. Wukesong Arena. 12 Xicui Lu, Haidian District. (6828 6386) 五棵松体育馆, 海淀区西翠路12号

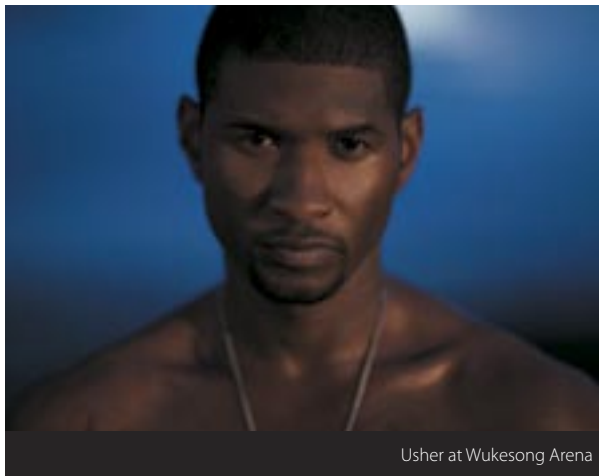
9PM

**Live Music: The Toy Captains** The unknown Chaoshan folk from the south. RMB 30, RMB 20 (students). D-22. 242 Chengfu Lu, Haidian District. (6265 3177) 海淀区成府路242号

**Lush Open Mic** Show off your talents for 15 minutes of fame and a free beer. Past acts have ranged from freestyle rap battles to tap dancing. RMB 10. Lush. 2/F, Bldg 1, Huaqing Jiayuan, Chengfu Lu (across from the Wudaokou light-rail station), Haidian District. (8286 3566) 海淀区成府路华清嘉园1号楼2层 (五道口城铁站对面)

10PM

**DJ: Delicious** Master mixologist George Zhou blends smooth jazz and smoother drinks to finish off the weekend. Free. Q Bar. On the top floor of Eastern Inn Hotel, 100m south of Beer Mania, Sanlitun Nanlu, Chaoyang District. (6595 9239) 朝阳区三里屯南路麦兜啤酒吧南100米



Usher at Wukesong Arena

JUL  
12

MONDAY

10AM

### Half-day Great Wall Hiking A

half-day hike on the Mutianyu Great Wall. RMB 420. Meet 10-11.30am. Call Lisa on 139 1150 8227 or 8621 6278 for more information. CnAdventure. www.cnadventure.com

NOON

### Free Afternoon Coffee

Free coffee for desert buyers every weekday afternoon. Homemade style deserts include brownie (RMB 10), apple pie (RMB 15), cheese cake (RMB 15). Lily's Diner. 2-18 Tianzhijiaozi, 31 Guangqu Lu (in the street just south of the Tianzhijiaozi complex, a few doors east of the gym), Chaoyang District. (6592 5548) 朝阳区广渠路31号院天之骄子2号楼2-18

2PM

**Lakeside Afternoon Tea** Daily afternoon tea at RMB 98 including a pot of your favorite tea and tea pastries include classic sandwiches and freshly baked scones served every afternoon before 5pm. Water. Store 15-4, Solana, 6 Chaoyanggongyuan Lu, Chaoyang District. (5905 6008/9, 137 0113 1533) 子水. 朝阳区朝阳公园路6号蓝色港湾国际商务区15-4

5PM

**Regent Beer Garden** Because drinking outside is fun. The Regent. 99 Jinbao Jie, Dongcheng District. (8522 1789) 北京丽晶酒店. 东城区金宝街99号

5.30-8.30PM

**Singapore Sling** Its sweetness juxtaposes with its sourness. Passionate cherry brandy pairs perfectly with sweet guava syrup, ornament with colorful pineapple and cherry made it one of most famous cocktail worldwide as well as a sign of Singapore. RMB 120 and up. Half price during Happy hours 5.30-8.30pm. Writers Bar. Raffles Hotel. Raffles Beijing Hotel, 33 Dongchangan Jie, Dongcheng District. (6526 3388) 北京饭店莱佛士. 东城区东长安街33号

6-10PM

### Scarlett Daily Special & Dessert

Order from the daily specials board and get a free scrumptious dessert.



Thriller-Live at the Beijing Exhibition Theater

Scarlett. Hotel G, 7A Gongti Xilu, Chaoyang District. (6552 2880) 朝阳区工体西路甲7号北京极栈内

6PM-MIDNIGHT

**Monday Pizza Night** Buy any pizza and get the second one for free. Ciro's Pomodoro. 81 Sanlitun Beilu, Chaoyang District. (5208 6008) 波莫多楼. 朝阳区三里屯北路81号

7.30PM

**Bookworm Pub Quiz** Put your grey matter to the test under some tough questioning. Wine specials all night. Free. The Bookworm. Courtyard 4, Gongti Beilu, Chaoyang District. (6586 9507) 书虫书吧. 朝阳区工体北路4号院

8PM

**THRILLER - LIVE** See Sunday, Jul 11 listing.

MOVIE NIGHT

**Flicks on the screen.** Free dessert if you buy dinner between 7-9pm. Free. Lush. 2/F, Bldg 1, Huaqing Jiayuan, Chengfulu (across from the Wudaokou light-rail station), Haidian District. (8286 3566) 海淀区成府路华清嘉园1号楼2层(五道口城铁站对面)

**Mojito Mondays** Centro's discounted mojito for RMB 55. Free. Centro. 1/F, Shangri-La's Kerry Centre Hotel, 1 Guanghua Lu, Chaoyang District. (6561 8833, ask for Centro) 炫酷. 朝阳区光华路1号嘉里中心饭店1层

8PM

**Live Music: Joanna Racsy** Jazz, pop and R&B entertains the cocktail crowd.

Free. Centro. 1/F, Kerry Centre Hotel, 1 Guanghua Lu, Chaoyang District. (6561 8833) 炫酷. 朝阳区光华路1号嘉里中心饭店1层

9.30PM

**The Boardroom** Buy-one-get-one-free Moët champagne cocktails, 20 percent discounts on all bottles of Johnnie Walker and Hennessy VSOP, and a free glass of sparkling wine for secretaries. If only all offices were like this. While Tia and The KnutZ heat up the dance floor with R&B, hip-hop, jazz and more. Free. Xiu. Park Hyatt, 2 Jianguomenwai Dajie, Chaoyang District. (5867 1108) 秀. 朝阳区朝阳区建国门外大街2号

TIMES VARY

**Beijing City Bus Tour** This daily bilingual city tour offers a brief introduction to Beijing's sights and planning. RMB 380, free (children under 1.2m). Day tour (3 hours) bus departs at 9.30am, 10am, 2pm and 2.30pm. Night tour (1.5 hours) bus departs at 7pm and 7.30pm. Tour departs from Guomao Exhibition Hall. Beijing Citybus Tour (400 650 0760) www.citybus tour.com

**Eel Day at Bei Bei** celebrates the Japanese tradition of eating eel on the hottest day of the year with a seven-course eel tasting menu. RMB 688+15%, RMB 328+15% for wine pairing. Bei, The Opposite House. Bldg 1, The Village at Sanlitun, 11 Sanlitun Lu, Chaoyang District. (6410 5230) 朝阳区三里屯路11号三里屯Village1号楼瑜舍

# JUL 13

## TUESDAY

### 6PM

**Irish Volunteer Quiz** How much do you get paid? The Irish Volunteer. Jiangtai Lu (opposite the east gate of the Lido Hotel), Chaoyang District. (150 1112 4113) 朝阳区高家园小区平房311号(丽都饭店东门对面)

### 7-9PM

**Gaelic Football** Beijing Gaelic Football Club holds weekly men's and women's practice games every Tuesday in the city; all skill levels are welcome. Details at beijinggaa@yahoo.com or www.beijinggaa.org.

### 7.15PM

**Beijing Devils Training** Rugby training out at Dulwich Legend Gardens, Shunyi. Free bus leaves The Den at 7.15pm. The Den, 4 Gongti Donglu (next to City Hotel's main entrance), Chaoyang District. (6592 6290) 敦煌. 朝阳区工体东路4号城市宾馆正门旁边

### 7.30PM

**Headhunter Social Networking Evening** An evening for people looking for career development and companies looking for employees. Professionals and headhunters from all industries welcome. RMB 80, RMB 50 (register before Jul 12). To register email eventbj@fcclub.com or call 139

1109 8002. Flames, Hilton Wangfujing, 8 Wangfujing East Street, Dongcheng District. (5812 8888) 东城区王府井东街8号北京王府井西尔顿

**Green Drinks** Midori, St. Patrick's Day lager ... actually a chance to meet likeminded do-gooders. Non-members are welcome. Free. The Bookworm. Courtyard 4, Gongti Beilu, Chaoyang District. (6586 9507) 书虫书吧. 朝阳区工体北路4号院

### 7.30-9.30PM

**Tuina Massage Course** Learn the basic acupoints and manipulations for relaxing the muscles and veins, either for treatments of common diseases or to maintain a state of general health. Eight-session class begins Apr 6. RMB 1,200 (8 sessions). China Culture Center. 29 Anjialou, Liangmaqiao Lu, Chaoyang District. (6432 9341) 朝阳区亮马桥路29号安家楼肯特中心院内

### 8PM

**THRILLER - LIVE** See Sunday, Jul 11 listing.

**Live Music: Sabrina Montgomery** Singer with a powerful set of vocal chords belts out jazz, funk and soul standards. Free. China Bar. Park Hyatt, 2 Jianguomenwai Dajie, Chaoyang District. (8567 1234) 朝阳区朝阳区建国门外大街2号

**Quiz Night** Questions and answers. Free. Tim's Texas Bar-B-Q, 14 Dongdaqiao Lu (on the corner of Guanghua Lu), Chaoyang District. (6591 9161) www.timsbarbq.com Tim's 熏烤房. 朝阳区东大桥路14号贵友大厦正北200米

### 8.30PM

**Shanghai Rose Duo** Jazz standards to entertain the lounge set. Free. Havana Bar, Grand Millennium, Fortune Plaza, 7 Dongsanhuan Zhonglu, Chaoyang District. (6530 9383) 朝阳区东三环中路7号财富中心

**Open Mic Night** Brave a demanding crowd and get a drink for your efforts. Free. Paddy O'Shea's, 28 Dongzhimenwai Dajie, Chaoyang District. (6415 6389) 朝阳区东直门外大街28号

### 8PM

**Live Music: P.K.14** Playing the entirety of their album Whoever, Whoever, Whoever from start to finish. RMB 30. D-22, 242 Chengfu Lu, Haidian District. (6265 3177) 海淀区成府路242号

**Mundo Latino with Magic Tequila** All night long, enjoy 20 percent discounts on all bottles of tequila to the sound of salsa and Latin rhythms. Free. Xiu. Park Hyatt, 2 Jianguomenwai Dajie, Chaoyang District. (5867 1108) 秀. 朝阳区朝阳区建国门外大街2号

**Eastside Open Mic** An open mic night with drinks specials to get you brave enough. Free. Tun. Courtyard 4 (20m south of Salsa Caribe), Gongti Beilu, Chaoyang District. (6585 5866) 屯. 朝阳区工体北路4号院

**The East is Pink** Comrades unite over two-for-one cocktails between 9pm-midnight before dancing into the early hours. RMB 5 tabs too. Free. White Rabbit, 2/F, Tongli Studios, Sanlitun Beilu, Chaoyang District. (no tel) 朝阳区三里屯北路同里2层

### 10PM

**Open Deck Tuesdays** Submit a demo and sign up for a two-hour slot. Free. Lantern, B1/F, 3.3 Shopping Center, 33 Sanlitun Beilu, Chaoyang District. (135 0134 8785) 朝阳区三里屯北路33号3.3服饰大厦地下1层

### ALL DAY

**Cheesy Tuesday** Get Enoteca's cheese plate for half-price when you order a bottle of wine from the special menu. All day. Enoteca. The Place, 9 Guanghua Lu, Chaoyang District. (6587 1578) 朝阳区光华路9号世贸天阶

**Westin Summer Surprise** Visit Grange or Zen5es and receive an RMB 100 cash voucher per table. Westin Chaoyang, 1 Xinyuan Nanlu, Chaoyang District. (5922 8880) 朝阳区新源南路1号威斯汀酒店



Green Drinks at The Bookworm

# JUL 14

## WEDNESDAY

6-11PM

**Martini Wednesdays** Beijing's best martinis? Ten of them are buy-one-get-one-free tonight. Free. Q Bar. On the top floor of Eastern Inn Hotel, 100m south of Beer Mania, Sanlitun Nanlu, Chaoyang District. (6595 9239) 朝阳区三里屯南路爱莫啤酒吧南100米

6.45PM

**Nia** A brand-new fusion of lifestyle and fitness. Apparently it's just like chocolate. RMB 110 (one class), RMB 800 (eight classes). Yin Yang Community Center, Courtyard 1, Hegezhuang Village, Chaoyang District. (6431 2108, contact@yinyangbeijing.com) www.yinyangbeijing.com 朝阳区崔各庄乡何各庄村1号院

7PM

**ROOMbeijing Intimate Sessions with Dimitri from Paris** Dimitri from Paris is one of the world's sauciest DJs. He set the auditory tones at Hugh Hefner's illustrious Playboy Mansion and is adored for his finesse at reconstructing the sounds of disco, jazz, samba, classic film soundtracks, pop and 80s' hits. Warm up DJ from 7pm. RMB 300. ROOMbeijing. Rm 301-302, 3/F, Park Life, Yintai Centre, 2 Jianguomenwai Dajie, Chaoyang District. (8517 2033) ROOM北京 朝阳区建国门外大街2号银泰中心301-302室

7-10PM

**Badminton** Shuttlecock shenanigans for the intermediate and advanced. Contact John at johnsk\_ho@hotmail.com.

7.15-9.15PM

**Cooking With Tea** Learn a new and healthy side to cooking at this fascinating class. RMB 220, RMB 200 (members). The Hutong. 1 Jiudaowan Zhongxiang Hutong (southeast of Beixinqiao subway station), Dongcheng District. (8915 3613) 东城区九道湾中巷胡同1号(北新桥地铁站东南边)

8PM

**THRILLER - LIVE** See Sunday, Jul 11 listing.

**Frank's Quiz** Win money. RMB 20. Frank's Place. Jiangtai Xilu, west of



Dimitri from Paris at ROOMbeijing

Rosedale Hotel, Lido area, Chaoyang District. (6437 8399) 朝阳区丽都荟台西路

**Lush Pub Quiz** Quizmaster Josh "Vegas" Lally presides. Come early for a seat. Winners take home a bottle of Jack. Free. Lush. 2/F, Bldg 1, Huaqing Jiayuan, Chengfu Lu (across from the Wudaokou light-rail station), Haidian District. (8286 3566) 海淀区成府路华清嘉园1号楼2层(五道口地铁站对面)

**Pomegranate Quiz** Quizmaster Karl one week, a guest every other. Expect fun questions on such topics as Cockney rhyming slang. Free. The Pomegranate. 19 Kaifa Lu, Xi Baixinzhuang, Houshayu, Shunyi District. (8046 2558) 石榴园 顺义区后沙峪西白辛庄开发路19号

8.30PM

**Paddy's Quiz** Free prizes for every round and free drinks for the top five finishers. Free. Paddy O'Shea's. 28 Dongzhimenwai Dajie, Chaoyang District. (6415 6389) 朝阳区东直门外大街28号

9PM-4AM

**Open Bar** All cocktails, Tsingtao and Draft beer for ladies RMB 30, gentlemen at RMB 60. Juicy spot. 2-3/F, 2 Chaoyang Xilu (30m south of Chaoyang Park West Gate), Chaoyang District. (6593 0610) 朝阳区朝阳公园西路2号楼2-3层(朝阳公园西门往南30米)

9PM

**Yellow** Ben Huang and guests bring electro-downbeat, funk and minimal

grooves. Free. White Rabbit. 2/F, Tongli Studios, Sanlitun Beilu, Chaoyang District. (no tel) 朝阳区三里屯北路同里2层

**Coquin Ladies Night** Free cocktails until 1am for those of the appropriate sex. Free. Touch, Westin Chaoyang, 1 Xinyuan Nanlu, Chaoyang District. (5922 8888 ext 8112) 朝阳区新源南路1号威斯汀酒店

**Kitchen** DJs Bitesize Buddha and Saul D cook up down and dirty funk soul disco and early hip-hop. Free. Punk. B1/F, The Opposite House, Bldg 1, The Village at Sanlitun, 11 Sanlitun Lu, Chaoyang District. (6410 5222) 朝阳区三里屯路11号三里屯Village 1号楼瑜舍地下1层

**Flashdance '70s/'80s** Retro night. Free. Lantern. B1/F, 3.3 Shopping Center, 33 Sanlitun Beilu, Chaoyang District. (135 0134 8785) 朝阳区三里屯北路33号3.3服饰大厦地下1层

TIMES VARY

**Tango** Learn from Alejandro and Camila. Arriba. RMB 120 per class. Private lessons available. See www.camilaye.com or call 8552 5228.

**One-day Great Wall Hike** Trekking from Jinshanling to Simatai Great Wall. RMB 500/person for a group of 2-5 people, RMB 420/person for a group of 6-9 people (price includes transport, guide, and entrance tickets). Sign up at least two days in advance at assistant@cnadventure.com; alternatively, call 5166 9102. CnAdventure. www.cnadventure.com

JUL  
15

THURSDAY

6PM

**Mediterranean Buffet** Savor food from Spain, Italy, Greece and North Africa, paired with wines from the region. RMB 188+15%. Coffee Garden, Shangri La's Kerry Centre Hotel. 1 Guanghua Lu, Chaoyang District. (8565 2188) 朝阳区光华路1号嘉里中心饭店

**Ladies' Night** A complimentary glass of rosé welcomes all ladies for an evening of live music and treats. Free. Enoteca. The Place, 9 Guanghua Lu, Chaoyang District. (6587 1578) 朝阳区光华路9号世贸天阶

**Wine Club** Discover some of the world's finest wine regions. Five wines and one cocktail accompanied by expert commentary and canapes. RMB 150+15% per person. One East. 2/F, Hilton Beijing, 1 Dongfang Lu, Chaoyang District. (5865 5030) 朝阳区东方路1号希尔顿酒店2层

6-10PM

**Bodega Fever** Fill up on as much tapas as you can from Scarlett's wide-ranging selection. Scarlett. Hotel G, 7A Gongti Xilu, Chaoyang District. (6552 2880) 朝阳区工体西路甲7号北京极线内

7.15PM

**Beijing Devils Training** Rugby training out at Dulwich Legend Gardens, Shunyi. Free bus leaves The Den at 7.15pm. The Den. 4 Gongti Donglu (next to City Hotel's main entrance), Chaoyang District. (6592 6290) 敦煌. 朝阳区工体东路4号城市宾馆正门旁边

7.30 PM

**Book Talk: When a Billion Chinese Jump** Jonathan Watts, the award-winning China correspondent for the UK's Guardian newspaper, discusses his latest book, *When a Billion Chinese Jump: How China Will Either Save the World or Destroy It*. Watts examines the choices available to China: to either become a green superpower or an agent of global ecological disaster. RMB 30, RMB 50 (members). The Bookworm. Courtyard 4, Gongti Beilu, Chaoyang District. (6586 9507) 书虫书吧, 朝阳区工体北路4号院

7.30 & 9PM

**Samba for Beginners** Beginner's class on every Thursday by native Brazilian and professional dancer and fitness instructor Renata Secco who has over 10 years of performing and teaching experience in Brazil, USA and Asia. RME 80 per lesson. J-Ballet Studio. 1/F, Bldg D, Jingxiu Yuan, Xingfucun Zhonglu, Chaoyang District. (8453 3003) 朝阳区幸福村中路景绣园D座1层

8.30PM

**Paddy's Networking Thursdays** Work your contacts. Free. Paddy

O'Shea's. 28 Dongzhimenwai Dajie, Chaoyang District. (6415 6389) 朝阳区东直门外大街28号

9PM

**Live Music: Lonely China Day, The Offset: Spectacles** The well-shaped Chinese offspring of Radiohead and The Velvet Underground. RMB 79.9, RMB 69.9 (advance). Yugong Yishan. 2-3 Zhang Zizhong Lu (former Duan Qirui government building, east of Ping'an Dadao), Dongcheng District. (6404 2711) 愚公移山, 东城区张自忠路2-3号祺祺瑞瑞执政府旧址西院

**Ladies Night** All cocktails free for ladies. Juicy spot. 2-3/F, 2 Chaoyang Xilu (30m south of Chaoyang Park West Gate), Chaoyang District. (6593 0610) 朝阳区朝阳公园西路2号楼2-3层 (朝阳公园西门往南30米)

**Beer for Queer** Buy-one-get-one-free for the LGBT community. Free. The Boat. 8 Liangmahe Nanlu (west of Sanlitun Beijie), Chaoyang District. (8468 0735) 朝阳区亮马河南路8号 (三里屯北街西边)

**Give Me Goose** Buy-one-get-one-free on bottles of Grey Goose. Free. Bling. Solana 5-1, 6 Chaoyang Gongyuan Lu, Chaoyang District. (5905 6999) 朝阳区朝阳公园路6号Solana蓝色港湾国际商区5-1

**33 45 Underground Disco Project** Yang Bing and a rotating crop of DJ talent keep the ladies happy. The buy-one-get-two-free drinks deal keeps them happier. Free. White Rabbit. 2/F, Tongli Studios, Sanlitun Beilu, Chaoyang District. (no tel) 朝阳区三里屯北路同里2层

9.30PM

**Liu Yue Guitar Trio** Jazz lines read by classic guitar. Free. East Shore Live Jazz Café. 2 Qianhai Nanyanlu (just to the west of the post office on Di'anmenwai Dajie), Xicheng District. (8403 2131) 东岸咖啡, 西城区地安门外大街前海南沿2号楼2层

**Gayographic Happy Hour** Two-for-one drink specials until midnight and a free Thai buffet for early birds at Lantung's "pink" happy hour. Free. Lantung. Solana, 6 Chaoyang Gongyuan Lu, Chaoyang District. (5905 6213) 兰棠, 朝阳区朝阳公园路6号蓝色港湾国际商区

10PM

**Girls' Night Out** Free vodka drinks from 10pm-1am for the ladies. Free. Xiu. Park Hyatt, 2 Jianguomenwai Dajie, Chaoyang District. (5867 1108) 秀, 朝阳区朝阳区建国门外大街2号



Mediterranean Buffet at Kerry Center's Coffee Garden



JUL  
16

FRIDAY

→ 10AM ←

### Half-day Great Wall Hiking

A half-day hike on the Mutiayuan Great Wall. RMB 420. Meet 10-11.30am. Call Lisa on 139 1150 8227 or 8621 6278 for more information. CnAdventure. www.cnadventure.com

→ 6PM ←

**Thank Funk It's Friday** Half-price drinks from 6-9pm. Free. Zeta Bar. 2/F, Hilton Beijing, Dongfang Lu, Dongsanhuan Beilu, Chaoyang District. (5865 5000) 颐达吧, 朝阳区东三环北路东方1号希尔顿饭店2层

→ 6-10PM ←

**Eating with Nemo** Dive into king crabs, oysters, lobster, caviar and salmon – have it steamed, fried or roasted to your taste at live cooking stations. RMB 288+15% (including local beer), RMB 120+15% extra for free flow of wine. Elements, Hilton Hotel. 1 Dongfang Lu, Dongsanhuan Beilu, Chaoyang District. (6466 2288) 希尔顿酒店, 朝阳区东三环北路东方路1号

**Thank God it's Friday** All standard drinks for RMB 25. TGIF Coupons are on sale buy 5 coupons and get the 6th drink for free! Coupons can be used every Friday. Scarlett. Hotel G, 7A Gongti Xilu, Chaoyang District. (6552 2880) 朝阳区工体西路甲7号北京极栈内

→ 6.30PM ←

**Kunqu Opera: The Peony Pavilion** One of the most ancient forms of Chinese opera, Kunqu dates back to the Ming dynasty. The Peony Pavilion – a mythical tale of true love battling conservative feudal ethics – is one of its definitive pieces. RMB 580-1,980 (includes dinner). Nanxincang Imperial Granary. Nanxincang, 22 Dongshihitiao, Chaoyang District. (6409 6477/99) 皇家粮仓, 朝阳区东四十条22号南新仓

→ 7.30PM ←

**Live Music: PTS, MNT, TST** Yeah, there are Mongolian hip-hop groups. Need we say more? RMB 50, RMB 40 (advance, students). Mako Live House. Inside Hongdian Art Factory, Courtyard 46 (500m south of Carrefour Shuangjing, inside small alley), Guangqu Lu, Chaoyang District. (5205



Kunqu Opera: *The Peony Pavilion* at Nanxincang Imperial Granary

1112/3) 麻雀, 朝阳区广渠路36号院红点艺术工厂内 (幸福贝贝南边)

→ 8PM ←

**Live Music: Sound Around** Funk, Latin and blues at one go. Tickets at \$599 1188. RMB 80-120, RMB 50 (students). Nine Theater, Chaoyang Culture Center. Corner of Jintai Xilu and Chaoyangmenwai Dajie (east of Jingguang Qiao), Chaoyang District. (8599 6011) 朝阳文化馆, 朝阳区朝阳门外大街和金太西路的路口

**Free Keg Night** The first keg of beer is free. By the time it's done, you'll be ready for happy hour. Free. Pyro. B1/F, Bldg 12, Huaqing Jiayuan, Wudaokou (5 min from Wudaokou subway station), Haidian District. (8286 6240) 海淀区五道口华清嘉园12号楼地下1层

**Friday Wine Fever** Free-flow tapas when you buy a RMB 200 bottle of wine. Free. Enoteca. The Place, 9 Guanghua Lu, Chaoyang District. (6587 1578) 朝阳区光华路9号世贸天阶

→ 9PM ←

**House of Decadence** By Sigma. DJ Chozie & DJ Bobby spin sophisticated house music for the Beijing elite. Free. The Beach. Block 8, Apartment 8 Complex, Chaoyang Gongyuan Xilu, Chaoyang District. (135 2188 2889) 朝阳区朝阳公园西路8号公馆

**Live Music: Nancheng Erge, Mythomania, Nanwu, Perdel** Cross-talk, folk

rock and Brit-pop. RMB 60, RMB 50 (advance, students). MAO Livehouse. 111 Gulou Dongdajie, Dongcheng District. (6402 5080) 光芒, 东城区鼓楼东大街111号

→ 10PM ←

**Live Music: Pork, Cassette, Mr. Rotten** Up-and-coming alternative rockers reinforce their base. RMB 40, RMB 30 (students). D-22. 242 Chengfu Lu, Haidian District. (6265 3177) 海淀区成府路242号

**'80s Night** Like the '80s but with less mullets. DJs Side B, The Spinster, Vinyl Richie and Sweet FA spin. Free. Alfa. 6 Xingfu Yicun (in the alley opposite the north gate of Workers' Stadium), Chaoyang District. (6413 0086) 阿尔法, 朝阳区幸福一村6号工体北门对面的胡同里

**Basement** Two-for-one drinks specials until midnight. Free. Punk. B1/F, The Opposite House, Bldg 1, The Village at Sanlitun, 11 Sanlitun Lu, Chaoyang District. (6410 5222) 朝阳区三里屯路11号三里屯Village 1号楼瑜伽地下1层

→ MIDNIGHT ←

**Verse'n'Bass** After-hours electro, dubstep and drum & bass in the downstairs cabin, dub, reggae and dancehall on the upper deck. Free. The Boat. 8 Liangmahe Nanlu (west of Sanlitun Beijie), Chaoyang District. (8468 0735) 朝阳区亮马河南路8号 (三里屯北街西边)

JUL  
17

SATURDAY

8.30AM

### Escape Concrete Beijing Daytrip to Badachu

Forget the hustle and bustle of an urban Beijing Day. Join the FC Club on a trip to Badachu, a park enclosed by three mountains, contains 12 designated natural scenes and 8 well-preserved temples. RMB 290. Registration is essential. To register email eventbj@fcclub.com or call 139 1109 8002.

1PM

### Field Hockey

Ice hockey minus the fights and ice. For more info, e-mail bjhockeyclub@hotmail.com. 1pm. Olympic Sports Center Stadium. 1 Anding Lu, Chaoyang District. (6417 7845) 奥体中心体育场, 朝阳区安定路1号

2PM

### Aussie Rules

Nine-a-side on grass. No wonder they say g'day a lot. More details at beijingfooty@yahoo.com. Jade Gardens.

3PM

### Film: Left Alive

This independent film, written and directed by Cheng Bai, chronicles the reality of artists in Songzhuang, one of Beijing's largest art villages. Free. Space for Imagination Café. 5 Xiwangzhuang, Shuangqing Lu, Haidian District. (6279 1280) 盒子咖啡馆, 海淀区双清路西王庄5号

7-11PM

**Do You Hutong?** This innovative fundraiser hosted by the Beijing Cul-

tural Heritage Protection Center will blend cultural heritage, art, dialogue and interpretation to create a fun and informative event in support of preserving priceless pieces of China's past. RMB 200, 150 (advance). For more info, call 6403 6532 ext 0 or email events.chp@gmail.com. Three Shadows Photography Art Centre. 155 East End Art, Caochangdi Village (Next to Platform China), Chaoyang District. (6432 2663) www.threeshadows.cn 三影堂摄影艺术中心, 朝阳区草场地艺术东区155号(站台中国旁)

7.30PM

### Live Music: New Worker Art Troupe

Folk extravaganza, singing for the migrant workers. RMB 40, RMB 30 (advance, students). Mako Live House. Inside Hongdian Art Factory, Courtyard 36 (500m south of Carrefour Shuangjing, inside small alley), Guangqu Lu, Chaoyang District. (5205 1112/3) 麻雀, 朝阳区广渠路36号院红点艺术工厂内(幸福贝贝南边)

### Drama: Black Light Theatre, Czech Republic

Black Light Theatre is among the best known representatives of the Czech dramatic art in the world. Details at www.jfjgjy.com. Price TBD. PLA Song and Dance Theater. 60 Deshengmennei Dajie, southeast corner of Jishuitan Bridge, Xicheng District. (8322 0726, 6613 1718) 解放军歌舞剧院, 西城区德胜门内大街60号积水潭桥东南角

8PM

### Live Music: Mei Zhiyong

Ambient musician from Changchun performs his own compositions. RMB 20. Raying Temple. East End of Qunfang Zhongyi Jie (West Gate of Yucai Middle School), Liyuan Town, Tongzhou District. (137 1698 0276) 小雷音俱乐部, 通州区梨园镇群芳中一街东首(育才学校西门)

**Live Music: Xin Dongbu Quintet** Jazz on a Saturday night. Tickets at 8599 1188. RMB 80-120, RMB 50 (students). Nine Theater, Chaoyang Culture Center. Corner of Jintai Xilu and Chaoyangmenwai Dajie (east of Jinguang Qiao), Chaoyang District. (8599 6011) 朝阳文化馆, 朝阳区朝阳门外大街和金太西路路口

9PM

### Havana Night

Buy-one-get-one-free on RMB 58 mojitos, Cuba libres and daiquiris, courtesy of Havana Club. Free. Scarlett. Hotel G, 7A Gongti Xilu, Chaoyang District. (6552 2880) 朝阳区工体西路甲7号北京极线内

### Nu-Mark

Former Jurassic 5 production wizard returns to Beijing. RMB 80, RMB 50 (advance). Yugong Yishan. 2-3 Zhang Zizhong Lu (former Duan Qirui government building, east of Ping'an Dadao), Dongcheng District. (6404 2711) 愚公移山, 东城区张自忠路2-3号段祺瑞执政府旧址西侧

### Live Music: I.L.T.B, Youth Qingnian

Xiaohuozhi Electro rock party generated by laptops and indie poppers. RMB 60, RMB 50 (advance). MAO Livehouse. 111 Gulou Dongdajie, Dongcheng District. (6402 5080) 光芒, 东城区鼓楼东大街111号

### Live Music: PTS

The Mongolian hip-hopppers perform their second Beijing show. RMB 30. Jianghu Liveshow Bar. 7 Dongmianhua Hutong, Jiaodaokou Nandajie, Dongcheng District. (6401 4611) 江湖酒吧, 东城区交道口南大街东棉花胡同7号

10PM

### Beijing Zoo 1st Anniversary

Kid Fresh is back for more, with Hong Kong's DJ Yellow and residents Lomang and Saul D. Free. Punk. B1/F, The Opposite House, Bldg 1, The Village at Sanlitun, 11 Sanlitun Lu, Chaoyang District. (6410 5222) 朝阳区三里屯路11号三里屯Village 1号楼瑜伽舍地下1层

### Live Music: You Mei You, Rustic, Lazy

Camels, Candy Monster Hard rockers and punk heads start their anarchy in Wudaokou. RMB 40, RMB 30 (students). D-22. 242 Chengfu Lu, Haidian District. (6265 3177) 海淀区成府路242号

### Saturday Alive

Scarlett comes "Alive" after 10pm with DJ Maxwell spinning along with live jazz musicians and singers! Cocktails are RMB 50, 15% discount on bottles of spirits. Scarlett, Hotel G. 7A Gongti Xilu, Chaoyang District. (6552 3600) 朝阳区工体西路甲7号北京极线内



Nu-Mark at Yugong Yishan

# JUL 18

## SUNDAY

### 11.30AM

**Poolside BBQ Buffet** RMB 158 Swim, eat and drink to your heart's content. Doubletree by Hilton Beijing Pool. 11.30am-4.30pm. 168 Guang'anmen Waidajie, Xuanwu District. (6338 1888) 宣武区广安门内大街168号

### NOON-3PM

#### Sundays at St. Regis

A kaleidoscope of international flavors and a view of the charming St. Regis garden. RMB 398+15% (includes champagne and cocktails. Garden Court. St. Regis Hotel, 21 Jianguomenwai Dajie, Chaoyang District. (6460 6688 ext 2340) 景苑咖啡厅, 朝阳区建国门外大街21号国际俱乐部饭店

**American Sunday Roast** Lazy Sundays of prime beef rib cut tableside with all the trimmings plus traditional puddings and pies. RMB 178+15%, RMB 98+15% extra for wine buffet. One East, Hilton Hotel. 1 Dongfang Lu, Dongsanhuan Beilu, Chaoyang District. (6466 2288) 希尔顿酒店, 朝阳区东三环北路东方路1号

### 1.50PM

**Hutong Rickshaw Tour** Explore the hutong on this rickshaw ride, before stopping in to see a traditional courtyard and meet a local family. Call Lisa on 139 1150 8227 or 8621 6278 for more information. RMB 180. Meet at 1.50pm at the South gate of Lotus Lane. CnAdventure. www.cnadventure.com

### 2PM

**Water Polo** Beijing Ducks play most Sundays. All skill levels welcome. For more info, contact richard.andrew.young@gmail.com. International School of Beijing. 10 Anhua Jie, Shunyi District. 北京顺义国际学校, 顺义区安华街10号

**Mahjong Workshop** You'll be playing independently within one hour, newbie. RMB 70. China Culture Center. 29 Anjialou, Liangmaqiao Lu, Chaoyang District. (6432 9341) 朝阳区亮马桥路29号安家楼青特中心院内

### 3PM

**American Football** The only American football group in Beijing play flag



Beijing Ducks Water Polo at ISB

football for weekend fun. Contact Yoyao Hsueh at yoyao@gmail.com or 159 0120 2499. Chaoyang Park

### 4-6PM

**INTRO Workshops** Learn about DJing, VJing and producing electronic music. Free. Lantern. B1/F, 3.3 Shopping Center, 33 Sanlitun Beilu, Chaoyang District. (135 0134 8785) 朝阳区三里屯北路33号3.3服饰大厦地下1层

### 4-10PM

**Weekend Happy Hour** Climb up to Lantung's Moon Deck roof terrace for early evening chilling with a hookah and a view. RMB 100 for all-you-can-drink cocktail specialties, including fresh fruit shakes with rum or vodka and Lantung's specialty infused vodka mojitos. All-you-can-drink fresh tropical shakes are RMB 80. Lantung. Solana, 6 Chaoyang Gongyuan Lu, Chaoyang District. (5905 6213) 兰棠, 朝阳区朝阳公园路6号蓝色港湾国际商业

### 5.30 & 7PM

**Samba Intermediates** Intermediate class on every Sunday by native Brazilian and professional dancer and fitness instructor Renata Secco who has over 10 years of performing and teaching experience in Brazil, USA and Asia. RME 80 per lesson. J-Ballet Studio. 1/F, Bldg D, Jingxiu Yuan, Xingfucun Zhonglu, Chaoyang District. (8453 3003) 朝阳区幸福村中路景绣园D座1层

### 9PM

**Lush Open Mic** Show off your talents for 15 minutes of fame and a free beer. RMB 10. Lush. 2/F, Bldg 1, Huaqing Jiayuan, Chengfu Lu (across from the Wudaokou light-rail station), Haidian

District. (8286 3566) 海淀区成府路华清嘉园1号楼2层 (五道口地铁站对面)

### 10PM

**DJ: Delicious** Master mixologist George Zhou blends smooth jazz and smoother drinks to finish off the weekend. Free. Q Bar. On the top floor of Eastern Inn Hotel, 100m south of Beer Mania, Sanlitun Nanlu, Chaoyang District. (6595 9239) 朝阳区三里屯南路麦菟啤酒吧南100米

### TIMES VARY

**Modern Dance: BeijingDance/LDXTX Housewarming Party** In celebration of their new home, the modern dance company will be offering a weekend of dance festivities, including workshops, film screenings and performances. Details at www.beijingldtx.com. RMB 50-100. BeijingDance/LDXTX Studio. 16 Xiadianchangpo Village, Xidawang Road, Chaoyang District. (6405 4842) 北京雷动天下现代舞团, 朝阳区朝阳区下甸厂坡村16号

**Touch Rugby** You can practice touching on the free bus from The Den. www.beijingdevils.com

**Hash House Harriers** Run every Sunday, then drink like a sailor at port. Meet at Paddy O'Shea's. Meeting times vary (www.hash.cn). Paddy O'Shea's. 28 Dongzhimenwai Dajie, Chaoyang District. (6415 6389) 朝阳区东直门外大街28号

**The TREK Peloton Road Bike Cycling Club** Rental bikes are available. Riders are divided into groups based on speed and distance. More information at tom@cycloportschina.com or 139 1028 0053.

JUL  
19

MONDAY

10AM

### Half-day Great Wall Hiking A

half-day hike on the Mutianyu Great Wall. RMB 420. Meet 10-11.30am. Call Lisa on 139 1150 8227 or 8621 6278 for more information. CnAdventure. www.cnadventure.com

**Burger, Burger Mondays** Buy one signature burger, get a second free. Blue Frog. 3/F, Bldg 4, Sanlitun Village South, 19 Sanlitun Lu, Chaoyang District. (6417 4030) 蓝蛙. 朝阳区三里屯北路19号三里屯Village南区4号楼3层 S4-30 (6417 4030)

2PM

**Lakeside Afternoon Tea** Daily afternoon tea at RMB 98 including a pot of your favorite tea and tea pastries include classic sandwiches and freshly baked scones served every afternoon before 5pm. Water. Store 15-4, Solana, 6 Chaoyanggongyuan Lu, Chaoyang District. (5905 6008/9, 137 0113 1533) 子水. 朝阳区朝阳公园路6号蓝色港湾国际商务区15-4

5PM

**Regent Beer Garden** Because drinking outside is fun. The Regent. 99 Jinbao Jie, Dongcheng District. (8522 1789) 北京丽晶酒店. 东城区金宝街99号

5.30-8.30PM

**Singapore Sling** Its sweetness juxtaposes with its sourness. Passionate cherry brandy pairs perfectly with sweet guava syrup, ornament with colorful pineapple and cherry made it one of most famous cocktail worldwide as well as a sign of Singapore. RMB 120 and up. Half price during Happy hours 5.30-8.30pm. Writers Bar. Raffles Hotel. Raffles Beijing Hotel, 33 Dongchangan Jie, Dongcheng District. (6526 3388) 北京饭店莱佛士. 东城区东长安街33号

6-10PM

### Scarlett Daily Special & Desertr

Order from the daily specials board and get a free scrumptious dessert. Scarlett. Hotel G, 7A Gongti Xilu, Chaoyang District. (6552 2880) 朝阳区工体西路甲7号北京极线内

6PM-MIDNIGHT

**Monday Pizza Night** Buy any pizza and get the second one for free. Ciro's Pomodoro. 81 Sanlitun Beilu, Chaoyang District. (5208 6008) 波莫多洛. 朝阳区三里屯北路81号

7.30PM

**Bookworm Pub Quiz** Put your grey matter to the test under some tough questioning. Wine specials all night. Free. The Bookworm. Courtyard 4, Gongti Beilu, Chaoyang District. (6586 9507) 书虫书吧. 朝阳区工体北路4号院

8PM

**Movie Night** Flicks on the screen. Free dessert if you buy dinner between

7-9pm. Free. Lush. 2/F, Bldg 1, Huaqing Jiayuan, Chengfulu (across from the Wudaokou light-rail station), Haidian District. (8286 3566) 海淀区成府路华清嘉园1号楼2层 (五道口地铁站对面)

**Mojito Mondays** Centro's discounted mojito for RMB 55. Free. Centro. 1/F, Shangri-La's Kerry Centre Hotel, 1 Guanghua Lu, Chaoyang District. (6561 8833, ask for Centro) 炫酷. 朝阳区光华路1号嘉里中心饭店1层

**Live Music: Joanna Racsy** Jazz, pop and R&B entertains the cocktail crowd. Free. Centro. 1/F, Kerry Centre Hotel, 1 Guanghua Lu, Chaoyang District. (6561 8833) 炫酷. 朝阳区光华路1号嘉里中心饭店1层

9.30PM

**The Boardroom** Buy-one-get-one-free Moët champagne cocktails, 20 percent discounts on all bottles of Johnnie Walker and Hennessy VSOP, and a free glass of sparkling wine for secretaries. If only all offices were like this. While Tia and The KnutZ heat up the dance floor with R&B, hip-hop, jazz and more. Free. Xiu. Park Hyatt, 2 Jianguomenwai Dajie, Chaoyang District. (5867 1108) 秀. 朝阳区朝阳区建国门外大街2号

TIMES VARY

**Beijing City Bus Tour** This daily bilingual city tour offers a brief introduction to Beijing's sights and planning. RMB 380, free (children under 1.2m). Day tour (3 hours) bus departs at 9.30am, 10am, 2pm and 2.30pm. Night tour (1.5 hours) bus departs at 7pm and 7.30pm. Tour departs from Guomao Exhibition Hall. Beijing Citybus Tour (400 650 0760) www.citybustour.com

**Eel Day at Bei** Bei celebrates the Japanese tradition of eating eel on the hottest day of the year with a seven-course eel tasting menu. RMB 688+15%, RMB 328+15% for wine pairing. Bei, The Opposite House. Bldg 1, The Village at Sanlitun, 11 Sanlitun Lu, Chaoyang District. (6410 5230) 朝阳区三里屯路11号三里屯Village1号楼瑜舍

**Summer Truffle Menu** All month. Indulge in a multi-course set menu celebrating this world-renowned ingredient. RMB 588+15%. Le Pre Lenotre, Softel. Tower C, Wanda Plaza, 93 Jianguo Lu, Chaoyang District. (6410 5230) 朝阳区建国路93号万达广场C座万达索菲特大酒店



Sip on a Singapore Sling at the Raffles Hotel

JUL  
20

TUESDAY

10AM

**INN Coffee Morning** The International Newcomers Network meet and share. All are welcome. Free. The Bookworm. Courtyard 4, Gongti Beilu, Chaoyang District. (6586 9507) 书虫书吧·朝阳区工体北路4号院

6PM

**Irish Volunteer Quiz** How much do you get paid? The Irish Volunteer. Jiangtai Lu (opposite the east gate of the Lido Hotel), Chaoyang District. (150 1112 4113) 朝阳区高家园小区平房311号(丽都饭店东门对面)

7-9PM

**Gaelic Football** Beijing Gaelic Football Club holds weekly men's and women's practice games every Tuesday in the city; all skill levels are welcome. Details at beijinggaa@yahoo.com or www.beijinggaa.org.

7.15PM

**Beijing Devils Training** Rugby training out at Dulwich Legend Gardens, Shunyi. Free bus leaves The Den at 7.15pm. The Den. 4 Gongti Donglu (next to City Hotel's main entrance), Chaoyang District. (6592 6290) 敦煌·朝阳区工体东路4号城市宾馆正门旁边

7.30 PM

**Fashion, Media and Creative Industries Social Networking Evening** A special FC Club to meet the creative and talented people from the Media, Marketing, Advertising, P.R., Glamour, Fashion and Creative Industries who have the power to influence what we do and think. An evening to forge new connections with the secret army that toil night and day to ensure that we know what's hot and what's not. Entry includes complimentary drinks, canapés and happy hour until 10pm. RMB 130, RMB 80 (register before Jul 19). To register email eventbj@fcclub.com or call 139 1109 8002. Zeta Bar. 2/F, Hilton Beijing, Dongfang Lu, Dongsanhuan Beilu, Chaoyang District. (5865 5000) 颐达吧·朝阳区东三环北路东方1号希尔顿饭店2层

**Book Talk: *The Dragon's Gift: The Real Story of China in Africa*** Drawing on three decades of experience, Deb-



Book Talk: *The Dragon's Gift The Real Story of China in Africa* at The Bookworm

orah Brautigam tackles the myths and realities of China's involvement with Africa – explaining what the Chinese are doing, how they do it, how much aid they give, and how it all fits into their “going global” strategy. RMB 50, RMB 30 (members). The Bookworm. Courtyard 4, Gongti Beilu, Chaoyang District. (6586 9507) 书虫书吧·朝阳区工体北路4号院

7.30-9.30PM

**Tuina Massage Course** Learn the basic acupoints and manipulations for relaxing the muscles and veins, either for treatments of common diseases or to maintain a state of general health. Eight-session class begins Apr 6. RMB 1,200 (8 sessions). China Culture Center. 29 Anjialou, Liangmaqiao Lu, Chaoyang District. (6432 9341) 朝阳区亮马桥路29号安家楼青特中心院内

8PM

**Quiz Night** Questions and answers. Free. Tim's Texas Bar-B-Q. 14 Dongdaqiao Lu (on the corner of Guanghua Lu), Chaoyang District. (6591 9161) www.timsbarbq.com Tim's 熏烤房·朝阳区东大桥路14号贵友大厦正北200米

8.30PM

**Open Mic Night** Brave a demanding crowd and get a drink for your efforts. Free. Paddy O'Shea's. 28 Dongzhimenwai Dajie, Chaoyang District. (6415 6389) 朝阳区东直门外大街28号

9PM

**Live Music: White+, Golden Driver, D-blow Mew** Shouwang and Wang Xu joined by shoegazing newcom-

ers D-blow Mew. RMB 30, RMB 20 (students). D-22. 242 Chengfu Lu, Haidian District. (6265 3177) 海淀区成府路242号

**Mundo Latino with Magic Tequila**

All night long, enjoy 20 percent discounts on all bottles of tequila to the sound of salsa and Latin rhythms. Free. Xiu. Park Hyatt, 2 Jianguomenwai Dajie, Chaoyang District. (5867 1108) 秀·朝阳区朝阳区建国门外大街2号

**Eastside Open Mic** An open mic night with drinks specials to get you brave enough. Free. Tun. Courtyard 4 (20m south of Salsa Caribe), Gongti Beilu, Chaoyang District. (6585 5866) 屯·朝阳区工体北路4号院

**The East is Pink** Comrades unite over two-for-one cocktails between 9pm-midnight before dancing into the early hours. RMB 5 tapas too. Free. White Rabbit. 2/F, Tongli Studios, Sanlitun Beilu, Chaoyang District. (no tel) 朝阳区三里屯北路同里2层

10PM

**Open Deck Tuesdays** Submit a memo and sign up for a two-hour slot. Free. Lantern. B1/F, 3.3 Shopping Center, 33 Sanlitun Beilu, Chaoyang District. (135 0134 8785) 朝阳区三里屯北路33号. 3服饰大厦地下1层

ALL DAY

**Cheesy Tuesday** Get Enoteca's cheese plate for half-price when you order a bottle of wine from the special menu. All day. Enoteca. The Place, 9 Guanghua Lu, Chaoyang District. (6587 1578) 朝阳区光华路9号世贸天阶

# JUL 21 WEDNESDAY

6-10PM

## Beijing Energy Network Happy Hour

Join BEN's Energy & Environment (BEER) roundtable. Non-members are welcome. Free. The Bookworm. Courtyard 4, Gongti Beilu, Chaoyang District. (6586 9507) 工体北路4号院

6-11PM

**Martini Wednesdays** Beijing's best martinis? Ten of them are buy-one-get-one-free tonight. Free. Q Bar. On the top floor of Eastern Inn Hotel, 100m south of Beer Mania, Sanlitun Nanlu, Chaoyang District. (6595 9239) 朝阳区三里屯南路麦兜啤酒吧南100米

6.30PM

**Basketball** Play with the Angels. General Administration of Sport of China Training Centre. www.angels-club.com.cn

6.45PM

**Nia** A brand-new fusion of lifestyle and fitness. Apparently it's just like chocolate. RMB 110 (one class), RMB 800 (eight classes). Yin Yang Community Center, Courtyard 1, Hegezhuang

Village, Chaoyang District. (6431 2108, contact@yinyangbeijing.com) 朝阳区崔各庄乡何各庄村1号院

8PM

## Frank's Quiz

Win money. RMB 20. Frank's Place. Jiangtai Xilu, west of Rosedale Hotel, Lido area, Chaoyang District. (6437 8399) 朝阳区丽都将台西路

## Lush Pub Quiz

Quizmaster Josh "Vegas" Lally presides. Come early for a seat. Winners take home a bottle of Jack. Free. Lush. 2/F, Bldg 1, Huaqing Jiayuan, Chengfu Lu (across from the Wudaokou light-rail station), Haidian District. (8286 3566) 海淀区成府路华清嘉园1号楼2层 (五道口地铁站对面)

## Pomegranate Quiz

Quizmaster Karl one week, a guest every other. Expect fun questions on such topics as Cockney rhyming slang. Free. The Pomegranate. 19 Kaifa Lu, Xi Baixinzhuang, Houshayu, Shunyi District. (8046 2558) 石榴园. 顺义区后沙峪西白辛庄开发路19号

8.30PM

## Born From Pain, Unregenerate

**Blood** Dutch metalcore make some noise. Let's hope the Jiadaokou police won't find out. RMB 80, RMB 60 (advance). MAO Livehouse. 111 Gulou Dongdajie, Dongcheng District. (6402 5080) 光芒. 东城区鼓楼东大街111号

**Paddy's Quiz** Free prizes for every round and free drinks for the top

five finishers. Free. Paddy O'Shea's. 28 Dongzhimenwai Dajie, Chaoyang District. (6415 6389) 朝阳区东直门外大街28号

9PM-4AM

**Open Bar** All cocktails, Tsingdao and Draft beer for ladies RMB 30, gentlemen at RMB 60. Juicy spot. 2-3/F, 2 Chaoyang Xilu (30m south of Chaoyang Park West Gate), Chaoyang District. (6593 0610) 朝阳区朝阳公园西路2号楼2-3层 (朝阳公园西门往南30米)

9PM

**Yellow Ben Huang** and guests bring electro-downbeat, funk and minimal grooves. Free. White Rabbit. 2/F, Tongli Studios, Sanlitun Beilu, Chaoyang District. (no tel) 朝阳区三里屯北路同里2层

**Coquin Ladies Night** Free cocktails until 1am for those of the appropriate sex. Free. Touch, Westin Chaoyang, 1 Xinyuan Nanlu, Chaoyang District. (5922 8888 ext 8112) 朝阳区新源南路1号威斯汀酒店

**Everything Irie** Sounds from Jamaica, with buy-one-get-one-free Guinness and rum and coke. Free cosmopolitans for the ladies. Free. Bing. Solana 5-1, 6 Chaoyang Gongyuan Lu, Chaoyang District. (5905 6999) 朝阳区朝阳公园路6号Solana蓝色港湾国际南区5-1

**Hump Day** Mid-week drinks discounts. Free. Pyro. B1/F, Bldg 12, Huaqing Jiayuan, Wudaokou (5 min from Wudaokou subway station), Haidian District. (8286 6240) 海淀区五道口华清嘉园12号楼地下1层

9.30PM

**Divas & Champagne** Buy-one-get-one-free Moët champagne cocktails and bottles. Free. Xiu. Park Hyatt, 2 Jianguomenwai Dajie, Chaoyang District. (5867 1108) 秀. 朝阳区朝阳区建国门外大街2号

10PM

**Kitchen** DJs Bitesize Buddha and Saul D cook up down and dirty funk soul disco and early hip-hop. Free. Punk. B1/F, The Opposite House, Bldg 1, The Village at Sanlitun, 11 Sanlitun Lu, Chaoyang District. (6410 5222) 朝阳区三里屯路11号三里屯Village 1号楼瑜舍地下1层

**Flashdance '70s/'80s** Retro night. Free. Lantern. B1/F, 3.3 Shopping Center, 33 Sanlitun Beilu, Chaoyang District. (135 0134 8785) 朝阳区三里屯北路33号3.3服饰大厦地下1层



Flashdance '70s/'80s at Lantern



*Uchinaga was rated "one of the 50 most powerful international businesswomen" by Fortune*

## EDUCATING GLOBAL LEADERS

*Berlitz Global CEO Yukako Uchinaga*

*Over the course of her three decades at IBM Japan Yukako Uchinaga rose from a systems engineer to a seat on the Board of Directors at one of the world's most recognizable brands. Now as the Global CEO of Berlitz International, she explains her vision for how her company can provide the proper tools to nurture globalization-savvy business leaders.*

### **What role has language learning played in helping you advance your own career?**

I worked for IBM for 37 years – quite a long tenure. During my time there I had the position of head of research and development for first Japan and then all of Asia, so my background is very technical-oriented, towards IT solutions and IT products.

During this time I had to learn a lot about how to negotiate and cooperate with people from different cultures and different backgrounds.

If I could not speak English, I would not have been able to reach the position that I held at IBM. I think English is an essential language to have command of in a global business environment.

To speak one common language is very important to improve communications. For example, at the time when I joined IBM in 1971 my English was not good. My background was physics, so I would rather talk about physics.

I lasted three or four years without speaking any English. But suddenly I got an American boss, who spoke only English, no Japanese,

so I was forced to speak English to communicate. If I could not speak English I couldn't communicate with my boss. Eventually I learned a lot and was gradually able to put it together and communicate well to do business in English.

I think that English is very important. Of course it is not everything, but to communicate with global customers is a very important first step.

### **What are the main advantages that Berlitz can offer business people, compared to other language learning programs?**

The language service industry is undergoing rapid commoditization. There are many options and competition is driving the price down. In that environment, Berlitz is recognized as high value, high price. What are our customers' requirements? About seven percent of our customers qualify as what we call "serious learners" – customers with specific, serious objectives. This includes the Toyota executive that wants to move manufacturing to China, or a company from the USA that wants to attempt a merger or an acquisition of a business in Brazil or Russia. They have clear objectives to learn the language. For these customers, just learning the language is not good enough to meet their goal. Their goal is business success in a different environment. They would like to have the leadership capability to put together teams of people from different backgrounds and different cultures. These customers' ultimate goal is to become global business leaders.

For these customers, whose goal is to become a global business leader or a global business talent, we can provide them with the total solution. Starting with language, we add some cross-culture training – how to adapt to a different culture, how to absorb difference into their comportment, and also how to communicate influence within the local culture.

So that is why we are now shifting from being just a language services

---

*"Our customers' ultimate goal is to become global business leaders"*

---

company to being a global leadership training company. We are now starting with the language, adding cross-culture training, and adding some business training, in order to develop the customer's skills and capabilities, to help them become a global talent.

**Berlitz International operates in more than 60 countries. What is it about the business that allows it to work in so many different cultural and business environments?** We respect local uniqueness, and also have very strong global foundations – this combination is important for helping us adapt well to business environments all over the world. As an organization we are also very diverse, employing native speakers of over 50 languages, and able to offer language learning services to our customers in so many languages. We are accepting of difference, which helps us to achieve balance.

**In what countries do you anticipate the most growth for Berlitz International over the next five to ten years?** Of course, China.

When I first joined the company, my first priority was to look at the strategy, business and management structure in Japan, North and South America and Europe.

Many people have advised me that China will not take the same road as countries such as Japan – but will leapfrog everyone.

So we are now introducing not only language, but also culture training, global leadership training, ELS, study abroad services – for all of these programs, we want to focus on developing the Chinese market.

In China we see so many talented people that can have a different caliber of success by going after the global market, and we have great programs and resources to help these people. For example, we have now articulated a five step program to use our language and cultural training courses to become a global leader. The first two steps involve a lot of

---

“Many people have advised me that China will not take the same road as countries such as Japan – but will leapfrog everyone”

---

cultural training, while the later steps focus more on business skills.

We are now trying to combine the traditional MBA training with more cultural approaches.

**In what ways can Berlitz' language learning programs add cultural competence, persuasive power and human networking skill value for rising corporate leaders?**

What is the difference between a local leader and a global leader? I think the difference is that the global leader must manage diversity. So we recognize how to manage diversity and inclusion – you have to understand the culture, you have to understand the language, you have to have the vision and analytical and team building skills.

I think the most important part of the global leader is that they must have their own identity – must understand their own history and art.

Perhaps the most important advantage that a global leader can have is a strong personal global network. So beyond the technical skills necessary to become a global leader, it is essential for people to develop their own identities and invest time and energy in building relationships. With this in mind, we have integrated a series of business language training seminars into our offerings.

We would like to form partnerships and alliances with various businesses to be able to service the wide range of educational needs that our students have as they work to achieve global leadership capacity.

First step is language and cross cultural training, and then the next step is to practice for using the language in specific practical business environments – like meetings, negotiations, or presentations.

**What is it like to be “one of the 50 most powerful international businesswomen” (according to Fortune magazine)?** That was more than ten years ago. I don't know why they chose me as one of the most powerful international businesswomen worldwide. I think they were surprised when I got the position as a board member for IBM Japan, and IBM was known to be very difficult place for women to advance. Especially surprising for them, perhaps, was that I rose to such high-level positions from inside the company, rather than being recruited from outside.

Women in traditional Japanese companies, like foreigners, are always outsiders. They are too often left out of the core of the business, because people don't know how to deal with them. There is no specific intention to exclude, but the just don't know how to include women. The male business culture in Japan is a very strong monoculture – they don't need to talk too much to each other, everyone is assumed to understand what everyone else wants, there is a lot of ambiguity and speaking in too much detail about things can make people uncomfortable.

So I think that this *Fortune* magazine article was meaningful for a lot of women in Japan, who were encouraged to see the success that I had achieved. That was one of the reasons I started J-Win, which is a program to help develop women managers and business owners. Since the *Fortune* magazine article, many other women have risen to become board members at Japan's largest companies. It was just one article, but it was very meaningful for Japanese businesswomen.

*Interview by Gabriel Monroe*



# BEIJING ATTRACTIONS

Excerpted from the Insider's Guide to Beijing 2010, available at bookstores around town and by delivery to your home office or hotel. (5820 7700, distribution@truerun.com).

**Beihai Park – Circular City** The Yuan dynasty built its imperial palace on the eastern shore of Beihai, the sole remnant of which is the Circular City and the green jade jar housed within. Atop Qionghua Island is Beihai's centerpiece, the White Dagoba. Famous for its seas of lotuses that bloom in June and July, Beihai is particularly popular as a boating destination. *Daily 6am-8.30pm. Park RMB 10 (Apr-Oct), RMB 5 (Nov-Mar); all access RMB 20; students half price. 1 Wenjin Jie, Xicheng District. (6403 1102) 北海公园-团城, 西城区文津街1号*



**Botanical Garden and Wofo Si Temple** With a state-of-the-art greenhouse and the largest plant collection in China, the Beijing Botanical Garden, located in western Beijing next to the Fragrant Hills, has a whole day's worth of flora. The highlight is the artificial jungle inside the greenhouse, with orchids, tropical trees and cacti. The sprawling grounds also contain Wofo Si, the Reclining Buddha Temple. *Daily 7am-5pm (garden), 8am-4.30pm (Wofo Si and greenhouse). Gardens RMB 10 (Apr-May), RMB 5 (Jun-Mar); greenhouse RMB 50; Wofo Si RMB 10. Wofo Si Lu, Xiangshan, Haidian District. (6259 1283) 北京植物园和卧佛寺, 海淀区香山卧佛寺路*



**Capital Museum** Housed in a cool modernist building, complete with state-of-the-art technology, the museum features curated exhibits and reconstructions of old hutong homes as part of its permanent exhibits on Beijing history, culture, folk customs and urban development. *Tue-Sun 9am-4pm, Free (advance reservations), RMB 30. 16 Fuxingmenwai Dajie, Xicheng District. (6337 0491) www.capitalmuseum.org.cn 首都博物馆, 西城区复兴门外大街16号*

**Coal Hill (Jingshan)** Created in 1420 using earth from the moat and the expansion of Beihai's lakes, this scenic hill is based on feng shui principles and was intended to protect the imperial palace from chilling northern winds. Jingshan is also where the last Ming dynasty emperor ended his reign: He hanged himself from a tree as Manchu troops stormed Beijing in 1644. *Daily 6am-9pm (spring-summer), 6.30am-8pm (autumn-winter). RMB 2. 1 Wenjin Jie, Xicheng District. (6404 4071) 景山公园, 西城区文津街1号*

**The Confucius Temple (Kong Miao)** Located on picturesque Guozijian just west of Yonghegong, this temple dedicated to China's seminal philosopher dates back to 1302 and is the largest temple of its kind outside of Qufu, Confucius's hometown in Shandong Province. *Daily 8.30am-5pm (4.30pm last ticket). RMB 20, RMB 10 (students). 13 Guozijian Jie (near the Lama Temple's main gate), Dongcheng District. (8402 7224) 孔庙和国子监, 东城区国子监街13号*

**Deshengmen** Its surrounding highways, byways and bus depot aside, this ancient city gate is unusually elegant and the jumble of architecture visible from the rooftop snack bar is highly photogenic. Kick back with a beer and boiled peanuts and imagine scenes of victorious troops returning from battle. *Tue-Sun 9am-4pm. RMB 20. Deshengmen Jian-lou, Beierhuai Lu, Xicheng District. (6201 8073 ext 0) 德胜门, 西城区北二环德胜门箭楼*

**Dongyue Temple** One of the few remaining traditional structures in the heart of the CBD, this Daoist temple houses hundreds of amazing life-size plaster figures representing the 73 Chiefs of Departments and 18 Layers of Hell. The Beijing Folk Arts Museum is located in the back of the temple. *Tue-Sun 8.30am-4.30pm. RMB 10. 141 Chaoyang-menwai Dajie, Chaoyang District. (6551 0151) 东岳庙, 朝阳区朝阳门外大街141号*

**Drum and Bell Towers (Gulou and Zhonglou)** Buildings similar to the Drum Tower have stood in this vicinity for over 700 years, but the current structure dates back to 1800, when hours of the day were beaten on 24 drums. Today, the tower houses 25 drums that are beaten for visitors every half-hour between 9-11.30am and 2-5pm. Just north of the Drum Tower is the Bell Tower, named after the 500-year-old bronze beast with 10cm thick walls. *Daily 9am-5pm. Drum Tower RMB 20, RMB 10 (students). Bell Tower RMB 15, students RMB 8. Dianmen Dajie, Dongcheng District. (8402 7869) 钟鼓楼, 东城区地安门大街*

**The Forbidden City** Home to emperors since the Ming dynasty, this is the physical and historical heart of old Beijing and its most famous attraction (see also Tian'anmen Gate, Square and Chairman Mao Memorial Hall). *Daily 8.30am-4pm (Apr-Oct), 8.30am-3.30pm (Nov-Mar). RMB 60 (Apr-Oct), RMB 40 (Nov-Mar); students RMB 20; children under 1.2m free. Audio tour RMB 40 (RMB 100 deposit). North of Tian'anmen Square. (8500 7114) www.dpm.org.cn 故宫, 天安门广场北侧*

**Fragrant Hills Park (Xiangshan) and Azure Clouds Temple (Biyan Si)** This park, carved from imperial hunting grounds, is a civilized jumble of smoke trees, small pagodas and scenic pools culminating in a view of Beijing from Incense Burner Peak (Xianglu Feng). A chairlift is available for those not up to the hour-long hike to the top. Trails lead from the peak further into the Western Hills. Near the park's north entrance is Azure Cloud Temple, built in 1331 and home to the Hall of Arhats, featuring 508 life-size figures of holy men, and the marble Diamond Throne Pagoda, surrounded by stupas.

*Fragrant Hills Park: Daily 6am-6.30pm (summer), 6am-6pm (winter). RMB 10, RMB 5 (students). Xiangshan, Haidian District. (6259 1155) Azure Clouds Temple: Daily 8am-5pm (summer), 8.30am-4.30pm (winter). RMB 10. (6259 1155 ext 470) Fragrant Hills Hotel (6259 1155) 香山公园, 海淀区香山: 碧云寺和香山宾馆, 海淀区香山公园内*

**Ming Dynasty City Wall Ruins Park, Dongbianmen Watchtower and the Ancient Observatory** This reconstructed section of the old city wall was refurbished using traditional lime and plaster and the original bricks. The eastern end is Dongbianmen Watchtower, a former gate to the Inner City that now houses the Red Gate Gallery, featuring exhibitions of modern

Chinese art. From here, it's possible to walk to another remnant of the wall, the Ancient Observatory, which houses stargazing instruments, like armillary spheres and a quadrant altazimuth, as well as a reproduction of a Ming dynasty star map, all designed by Jesuit priests. *Daily 24 hours (park), 8am-5pm (tower). Free (park), RMB 10 (tower).* Along Chongwenmen Dongdajie, Chongwen District. (6527 0574) 明城墙遗址公园, 崇文门东大街沿线 Tue-Sun 9am-4pm. RMB 10, RMB 5 (students). 2 Dongbiaobei Hutong (southwest corner of Jianguomen Qiao), Dongcheng District. (6524 4324) 古观象台, 东城区建国门东大街东大街沿线 Tue-Sun 9am-4pm. RMB 10, RMB 5 (students). 2 Dongbiaobei Hutong (southwest corner of Jianguomen Qiao), Dongcheng District. (6524 4324) 古观象台, 东城区建国门东大街东大街沿线 Tue-Sun 9am-4pm. RMB 10, RMB 5 (students). 2 Dongbiaobei Hutong (southwest corner of Jianguomen Qiao), Dongcheng District. (6524 4324) 古观象台, 东城区建国门东大街东大街沿线 Tue-Sun 9am-4pm. RMB 10, RMB 5 (students).

**Old Summer Palace (Yuanmingyuan)** Originally constructed in 1709 during the reign of the Kangxi emperor, this originally 350-hectare garden and palace complex was called the "Garden of Gardens." Destroyed and plundered by Anglo-French forces in 1860, the ruins and its surrounding park has since become a symbol of China's humiliations at the hands of foreign aggressors. *Daily 7am-7pm (Apr-Oct), 7am-5:30pm (Nov-Mar).* RMB 10, RMB 5 (Chinese students); extra RMB 15 for ruins and labyrinth. 28 Qinghua Xilu, Haidian District. (6254 3673) 圆明园, 海淀区清华西路28号

**Prince Gong's Mansion** Located by the Shichahai lake district, this compound was the former residence of He Shen, a favorite, albeit notoriously favorite, minister of Qing dynasty Emperor Qianlong. Today it is one of the most well preserved historical compounds in Beijing. *Daily 7:30am-4:30pm. RMB 20, RMB 60 (guided tour).* 17 Qianhai Xijie, Xicheng District. (8328 8149) 恭王府, 西城区前海西街17号

**Qianmen** Located to the south of Tian'anmen Square, Qianmen was used exclusively by the emperor on his way to perform rituals during the winter solstice and first lunar month at the Temple of Heaven. These days it houses exhibits of old photographs, scale models of the Ming city gates and old playing cards. The Arrow Tower just south of Qianmen is also an impressive structure, but is not open to the public. *Daily 8:30am-4pm. RMB 20 (Apr-Oct), RMB 10 (Nov-Mar).* Qianmen Gate (South end of Tian'anmen Square), Chongwen District. (6511 8110) 箭门, 崇文门天安门广场南侧

**Song Qingling's Former Residence** Once a garden of a Qing dynasty prince, this picturesque compound on the northwestern shore of Houhai was

the residence of Song Qingling, the wife of Dr. Sun Yat Sen and a key figure in the founding of Republican China. *Daily 9am-5pm (Apr-Oct), 9am-4pm (Nov-Mar).* RMB 20, RMB 10 (college students), RMB 5 (middle & primary school students). 46 Houhai Beiyuan, Xicheng District. (6404 4205 ext 815) 宋庆龄故居, 西城区后海北沿46号

**The Summer Palace (Yiheyan)** The Empress Dowager Cixi's pleasure palace retains its imperial charm today, but was built at a heavy cost to the Chinese nation during the tumultuous years of the late Qing dynasty. *Daily 6:30am-8:30pm; last ticket 6pm (Apr-Oct). Daily 7am-7pm; last ticket 5pm (Nov-Mar).* RMB 30 (Apr-Oct), RMB 20 (Nov-Mar); students half price. Yiheyuan Lu, Haidian District. (6288 1144) 颐和园, 海淀区颐和园路

**Temple of the Origin of the Dharma (Fayuan Si)** Beijing's oldest Buddhist temple, Fayuan Si was built by Emperor Tang Taizong. Today it houses Beijing's biggest reclining Buddha statue at 7.4 meters, and Ming dynasty bronze statues of lions and the Four Heavenly Kings, and is surrounded by lovely grounds filled with old trees. *Daily 8:30am-3:30pm. RMB 5. Jiaozhi Hutong, 7 Fayuansi Qianjie, Xuanwu District. (6353 4171) 法源寺, 宣武区法源寺前街7号教子胡同*

**Temple of Heaven (Tiantan)** Another of Beijing's signature attractions, this imperial temple, known for its distinctively round architecture and altar, was the site of annual sacrifices by the emperors to heaven. *Daily 6am-9pm (park), 8am-4:30pm (sites).* RMB 15 (park), RMB 35 (all access). Yongdingmennei Dajie (West Gate), Chongwen District. (6702 8866) 天坛西门, 崇文区永定门内大街

**Tian'anmen Gate and Square, Chairman Mao Memorial Hall** The iconic "gateway" to the Forbidden City and site of Mao Zedong's famous portrait overlooks the largest public square in the world, which is home to the hall housing the embalmed body of the late Chinese leader. *Daily 8:30am-4:30pm. RMB 15. Mandatory bag check.* North end of Tian'anmen Square, Chang'an Jie, Dongcheng District. (6511 8600) 天安门, 东城区长安街天安门广场北侧 Tue-Sun 8am-noon. Free. South side of Tian'anmen Square, Dongcheng District. (6513 2277) 毛主席纪念堂, 东城区天安门广场南

**White Cloud Temple (Baiyun Guan)** Established in AD 793 during the Tang dynasty, this is one of Beijing's few Daoist temples, replete with

long-haired priests, herbalists, worshippers and a fascinating display of the pantheon of Daoist deities. *Daily 8:30am-4:30pm. RMB 10. 6 Baiyunguan Jie, Xibianmenwai, Xuanwu District. (6346 3531) 白云观, 宣武区西便门外白云观街6号*



**White Pagoda Temple (Baita Si)** The oldest presence of Tibetan Buddhism in Beijing, Baita Si dates back to the Mongol-controlled Yuan dynasty. The iconic structure was designed by a Nepalese architect, and legend has it that Kublai Khan had arrows shot in the four cardinal directions to determine its bounds. Today, it houses a collection of Tibetan Buddhist sculptures and other artwork. *Tue-Sun 9am-4:30pm. RMB 20, free on Wed (for the first 200 visitors).* 171 Fuchengmennei Dajie, Xicheng District. (6613 3317, 6617 6164) 白塔寺, 西城区阜成门内大街171号



**Yonghegong (Lama Temple)** Yonghegong was founded in 1694 and has housed lamas and monks of the Yellow Hat (Huang Jiao) school of Tibetan Buddhism since. It is also home to an

impressively large image of Buddha and remains one of the capital's most popular attractions. *Daily 9am-4:30pm. RMB 25, RMB 20 plus RMB 200 deposit (audio tour). 12 Yonghegong Dajie, Dongcheng District. (6404 4499 ext 252) 雍和宫·东城区雍和宫大街12号*



**Zhihua Temple** Zhihua Temple, an oasis of quiet courtyards and exquisite Buddhist artwork in the heart of the Central Business District, was built by the corrupt eunuch Wang Zhen in 1443 as his personal ancestral hall, but was later converted to a temple. Today, it's one of Beijing's finest examples of Ming Buddhist architecture and holds regular performances of Ming-era court and Buddhist music. The finely-carved revolving sutra cabinet is the only one of its kind in Beijing, and a reported 9,999 Buddha statues decorate the Tathagata Hall. *Daily 8:30am-4:30pm. RMB 20, RMB 10 (students). 5 Lumaticang Hutong, Chaoyangmen Nanxiaojie, Dongcheng District. (6525 0072) 智化寺·东城区朝阳门南小街禄米仓胡同5号*

## EXCURSIONS AROUND BEIJING

**Badaling Great Wall** Badaling is the most popular tourist portion of the Great Wall, primarily for its proximity to the city and reconstructed portions. *Daily 7am-7pm. RMB 45, RMB 25 (students). Yan-qing County. (6912 1737) 八达岭长城·延庆县*  
*Bus: Take Bus 919 from Deshengmen, Tourist Bus 1 from Qianmen, or Tourist Bus 2 from Beijing Railway Station. Train: Beijing's new high-speed suburban rail, the S2, takes one hour. From Beijing North Railway Station, trains (RMB 14-17) run every 30-90min; the first Beijing train leaves at 6:08am, and the last train leaves Yanqing at 9:27pm. Buy tickets for popular times in advance. The Great Wall is a 10-20min walk from the*

*Badaling station; black cabs make the trip for RMB 20.*

*Car: Take Badaling Expressway to Badaling Exit.*

**Mutianyu Great Wall** Like Badaling, Mutianyu is a modern, crowded section of Wall and is a 90-minute drive from Beijing. The chairlift or gondola can ferry visitors up, and a colorful slide can bring them down. *Daily 6:30am-6:30pm. RMB 40, RMB 20 (students), RMB 35 (one way chair lift), RMB 50 (round trip chair lift), RMB 50 (gondola). Huairou District. (6162 6505, 6162 6022) 慕田峪长城·怀柔区慕田峪镇*

*Bus: Tourist Bus 6 leaves from Xuanwu-men on weekends and national holidays from Apr 5 to Oct 15. Or take Bus 916 from Dongzhimen long-distance bus station to Huairou International Conference Center (怀柔国际会议中心) and change to a minibus or taxi to Mutianyu (RMB 25-30). Car: From Sanyuan Qiao on Third Ring Road, take Jingshun Lu (which becomes National Road 101) to Huairou Qiao and turn toward Huairou, follow signs to Qingchunlu Roundabout (青春路环岛) and turn to Huaisha Lu (怀沙路), keep driving to Mutianyu Roundabout and follow signs to the Great Wall.*

**Huanghuacheng Great Wall** This portion of the Wall features a scenic reservoir and more interesting looking ruins. *Daily Mon-Fri 8am-5:30pm, Sat-Sun 7am-6pm. RMB 25. Chengguan Town, Huairou District. (6165 1818) 黄花城长城·怀柔区城关镇*  
*Car: Take Badaling Expressway and exit at Changping Xiguan. Follow signs toward the Ming Tombs, then turn right when you reach Changling Tomb toward Jiuduhe (九渡河), turn left at the Jiuduhe intersection, and continue to the Huanghuazhen (黄花镇) intersection, then turn left. Once you reach the Y intersection, bear right and continue for a few more kilometers to the Wall.*



**Simatai Great Wall** The four-hour hike from Simatai to Jinshanling is one of the most spectacular ways to experience the Wall, but it is very steep in parts. (NOTE: SIMATAI IS CURRENTLY CLOSED TO VISITORS) *Daily 8am-5pm. RMB 40, RMB 20 (students), RMB 35 (zipline). Gubeikou Town, Miyun County. (6903 1051) 司马台长城·密云县古北口镇*

*Bus: On weekends take the 8:30am luxury tour bus (RMB 95) from Qianmen. The bus leaves Simatai around 3-4pm. Or, from Dongzhimen long-distance bus station, take Bus 980 to Miyun station (RMB 15, 1.5hr) then switch to a Simatai-bound bus (RMB 15, 1hr). Tourist bus 12 leaves from in front of the Xuanwu-men Cathedral on weekends from Apr 5 to Oct 15 (RMB 60). Car: From Sanyuan Qiao on Third Ring Road, take Jingcheng Lu past Miyun. At Tanghe Daqiao (Tanghe Bridge 汤河大桥) turn right before the bridge, then follow signs to Simatai Great Wall for the next 10km to get there. About 2.5 hrs.*

**Jinshanling Great Wall** Jinshanling is on the other end of the Simatai Jinshanling trek and is one of the only sections of Wall where it's legal to camp overnight. *Nov 6-Mar 15 8am-5pm, RMB 40; Mar 16-Nov 5 8am-4pm, RMB 50. Gubeikou, border between Miyun County and Hebei's Luanping County. (0314 883 0222) 金山岭长城·北京密云县与河北滦平县交界*  
*Bus: From Dongzhimen long-distance bus station, take a Chengde-bound bus and get off at Jinshanling. Then take a cab to the entrance for RMB 10. Car: From Sanyuan Qiao on Third Ring Road, take Jingshun Lu all the way past Miyun. At Gubeikou follow signs toward Chengde and then follow signs to Jinshanling Great Wall.*

## The Ming Tombs (Shi San Ling)

Thirteen of the 16 Ming emperors are buried in this picturesque valley of rolling hills and orchards. Of these tombs, three – Changling, Dingling and Zhaojing – are open to the public. During spring and autumn, the area is great for picnics.

**Changling Tomb** *Daily 8am-5pm. RMB 45 (Apr 1-Oct 31), RMB 30 (Nov 1-Mar 31), students half price. Changping District. (6076 1334) 长陵·昌平区*

**Dingling Tomb** *Daily 8am-5pm. RMB 65 (Apr 1-Oct 31), RMB 45 (Nov 1-Mar 31), students half price. Changping District. (6076 1424) 定陵·昌平区*

**Zhaojing Tomb** *Daily 8am-5pm. RMB 30 (Apr 1-Oct 31), RMB 20 (Nov 1-Mar 31), students half price. Changping District. (6076 3104) 昭陵·昌平区*

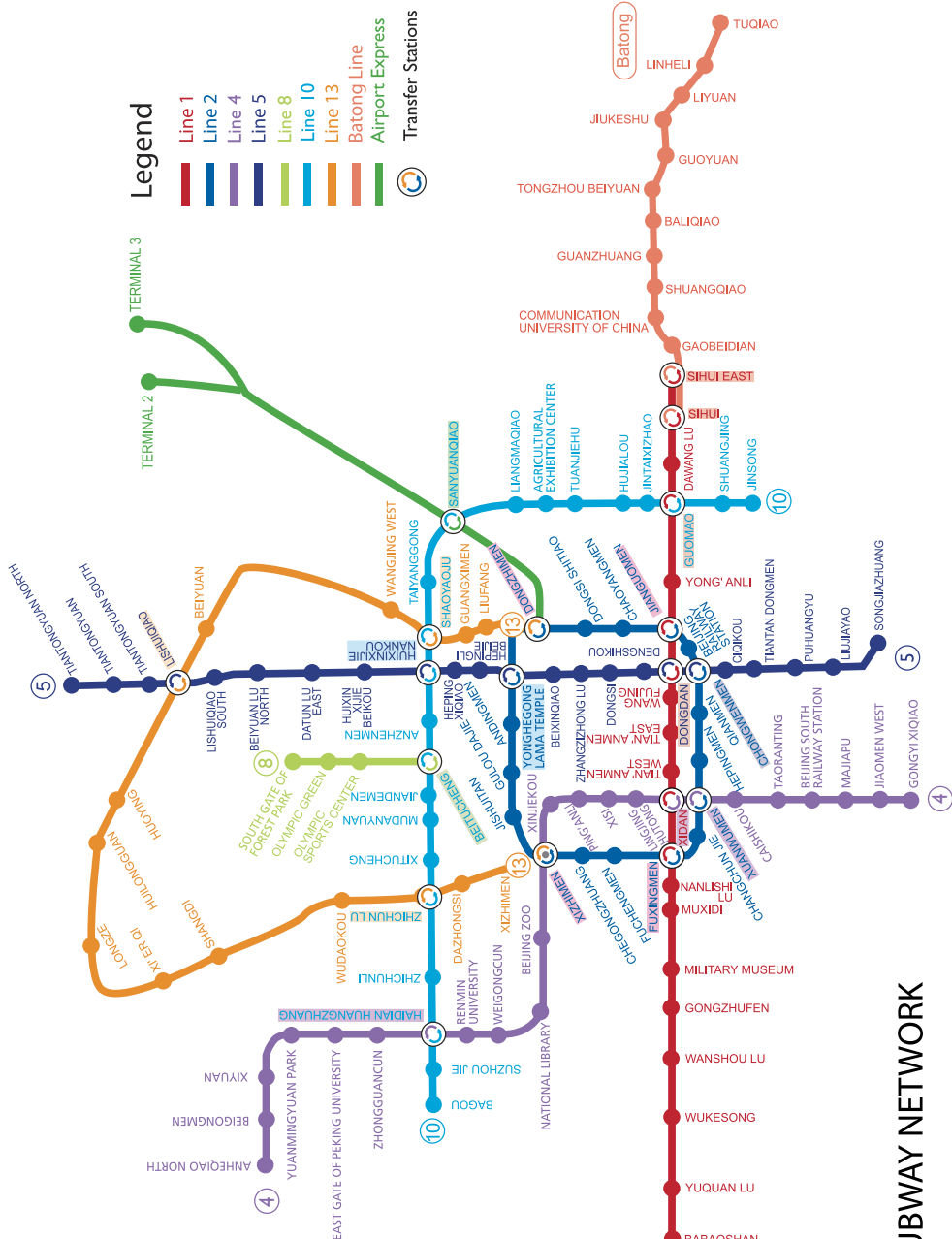
### Subway Starters

- Stations are indicated by the blue Beijing Subway (北京地铁 Beijing Ditie) logo.
- Tickets (票 piao) cost RMB 2. You can also put money on a transportation smart-card valid on all subways (RMB 20 deposit).
- First trains set out approx. 5am. Last trains set out approx. 10:30pm.
- Trains approx. every 3 min throughout the day (every 5-8 min on Line 13), slowing down to around once every 10 min after 8pm.
- Wheelchair access varies, but is generally difficult due to steep stairways, narrow escalators and high passenger volume.

**Legend**

- Line 1
- Line 2
- Line 4
- Line 5
- Line 8
- Line 10
- Line 13
- Batong Line
- Airport Express

**Transfer Stations**

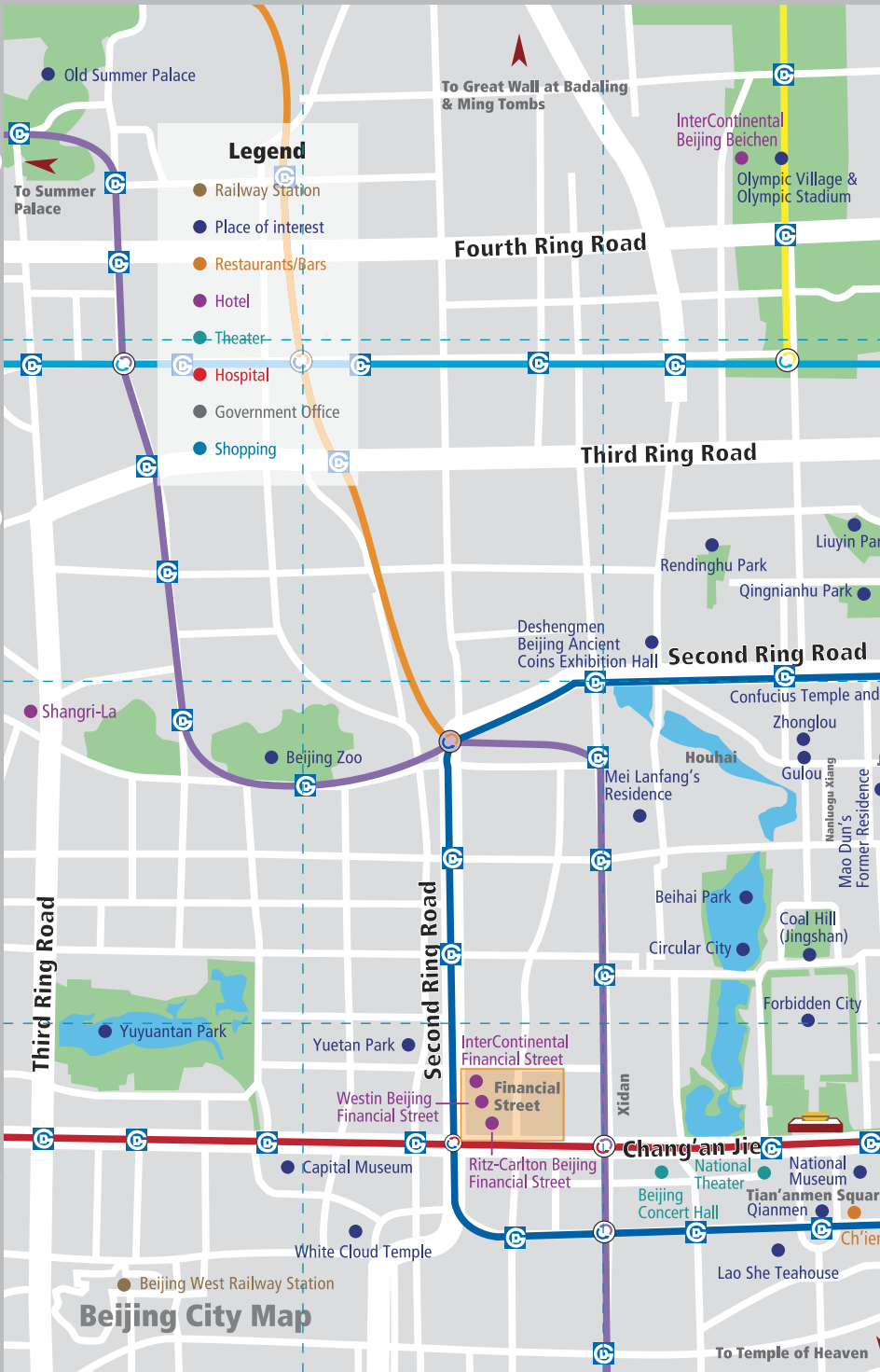


## BEIJING SUBWAY NETWORK

1

2

3



# Beijing City Map

4

5

6



# VISITOR INFO

Information on this page excerpted from the Insider's Guide to Beijing 2010, available in stores around Beijing or by delivery to your home, hotel or office. To order a copy, call 5820 7700, or e-mail distribution@immersionguides.com.

## COMMUNICATIONS

### USEFUL NUMBERS

**Ambulance & Emergencies** 120

**Beijing 999 Ambulance Service** 999

**Beijing United Family Hospital  
Emergency Room** 5927 7120

**Fire** 119

**Police** 110

**Traffic Accident** 122

**Telephone Directory** 114 (Chinese);  
1161 14 (press 2 for English service).

**Time** 117

**Weather** 12121

### PHONE CARDS/MOBILE PHONES

IP cards for calls in China and overseas are sold in cell phone stores, newsstands and China Telecom outlets. Cards with a face value of RMB 100 sell for RMB 30-40.

**SIM** cards and cell phone top-up cards (chong zhi ka, 充值卡) can be bought from cell phone stores, newsstands and SIM card shops. Call and SMS charges are as follows for the major networks:

**China Mobile Easyown (Shen Zhou Xing, 神州行)** Making and receiving calls costs RMB 0.6/min. Calls cost RMB 0.2/min within Beijing and RMB 0.3/min domestic long-distance if you dial 12593 first, then the number you wish to call.

**M-zone (Dong Gan Di Dai, 动感地带)** Local calls RMB 0.25/min at peak hours (9am-9pm), off-peak calls RMB 0.12/min.

**China Unicom Ruyitong (如意通)** Local calls RMB 5.4/min, longer distance calls RMB 1.24/min. Dialing 96531 before the number you wish to call reduces both local and long-distance calls to RMB 0.25/min. Receiving calls costs RMB 0.2/min (weekdays 9am-8pm) and RMB 0.35/min (off-peak).

**UP Xinshili (UP 新势力)** Local calls RMB 0.25/min. Receiving calls costs RMB 0.1/min. Paying an extra RMB 5 per month gives unlimited free incoming phone calls and lower fees for making phone calls.

### WI-FI

For a list of Wi-Fi locations in Beijing, visit [http://v4.jiwire.com/search-wifi-hotspots.htm?city\\_id=1757971](http://v4.jiwire.com/search-wifi-hotspots.htm?city_id=1757971).

### USEFUL WEBSITES

**www.thebeijinger.com** Agenda's sister site has a directory listing more than 4000 Beijing venues, as well as a blog, forum, events, reviews, classifieds, and more.

**www.beijing-kids.com** "Beijing's essential expat family resource" offers articles, events, a directory and forum catering to English-speaking families.

## HOSPITALS & CLINICS

**Bayley & Jackson Medical Center**

Clinic and dental hours Mon-Fri 9am-6pm; Sat 8am-4pm; doctor on call 24 hours. 7 Ritan Donglu, Chaoyang District. (400 810 0120, 5869 6166) [www.bjhealthcare.com](http://www.bjhealthcare.com) 庇利积臣医疗中心, 朝阳区日坛东路7号

**Beijing International SOS Clinic**

Daily 24 hours. Pharmacy Mon-Fri 8am-8pm, Sat-Sun 8am-6pm. Suite 105, Wing 1, Kunsha Bldg, 16 Xin-yuan-li, Chaoyang District. (6462 9112, 24hr 6462 9100) [www.internationalsos.com](http://www.internationalsos.com) 国际SOS, 朝阳区新源里16号琨莎中心1座105室

**Beijing United Family Hospital and Clinics**

Mon-Sat 8.30am-5.30pm, Sun 8.30am-5pm; 24-hour emergency. 2 Jianguai Lu, Lido area, Chaoyang District. (appointment 5927 7000, emergency 5927 7120) [www.united-familyhospitals.com](http://www.united-familyhospitals.com) 北京和睦家医院, 朝阳区将台路2号

**Beijing United Family Health & Wellness Center - Jianguomen**

Mon-Fri 8.30am-3.30pm. B1/F, St. Regis Hotel, 21 Jianguomenwai Dajie, Chaoyang District. (8532 1221, emergency 6433 2345) [www.unitedfamilyhospitals.com](http://www.unitedfamilyhospitals.com) 北京和睦家建国门保健中心, 朝阳区建国门外大街21号国际俱乐部饭店地下1层

**Beijing United Family Clinic**

- Shunyi Mon-Thu 9.30am-7.30pm; Fri-Sun 9.30am-4.30pm. Unit 818, Pinnacle Plaza, Tianzhu Real Estate Development Zone, Shunyi District. (8046 5432, emergency 5927 7120) [www.unitedfamilyhospitals.com](http://www.unitedfamilyhospitals.com) 北京和睦家顺义诊所, 顺义区天竺房地产业开发区荣祥广场818号

**Beijing Vista Clinic - Kerry Center**

Daily 24 hours; clinic hours 7.30am-9pm. B29, Kerry Center, 1 Guanghua Lu, Chaoyang District. (8529 6618) [www.vista-china.net](http://www.vista-china.net) 北京维世达

诊所, 朝阳区光华路1号嘉里中心B29号

**China-Japan Friendship Hospital**

Mon-Fri 8am-noon, 1.30-5pm; Sat 8-11.30am; 24-hour emergency. Yinghua Dongjie, Hepingli, Heping Jie Beikou, Chaoyang District. (6422 2952, 6422 3209) [www.zryhy.com.cn](http://www.zryhy.com.cn) 中日友好医院, 朝阳区和平街北口和平里樱花东街

**Hong Kong International Medical Clinic**

Daily 9am-9pm; 24-hour emergency, 9/F, Swissôtel office tower, 2 Chaoyangmen Beidajie, Dongcheng District. (6501 4260, 6553 2288 ext 2346) [www.hkclinic.com](http://www.hkclinic.com) 北京港澳国际医疗诊所, 东城区朝阳门北大街2号港澳中心办公楼9层

**International Medical Center (IMC)**

Daily 24 hours. S106, 1/F, Lufthansa Center, 50 Liang-maqiao Lu, Chaoyang District. (6465 1561/2/3, dental 6465 1384/94/28) [www.imclinics.com](http://www.imclinics.com) 国际医疗中心, 朝阳区亮马桥路50号燕莎中心1层S106

**Peking Union Medical College Hospital**

Mon-Fri 8am-4.30pm; 24-hour emergency. 1 Shuaifuyuan, Wangfujing (the foreigners' wing is located south of the inpatient building), Dongcheng District. (6529 5284, emergency 6529 5269) [www.pumch.ac.cn](http://www.pumch.ac.cn) 北京协和医院, 东城区王府井府前1号 (外国人就诊楼在门诊楼的南侧)

## MONEY

### ATMS

Most ATMs accept foreign bankcards connected to the Cirrus, Plus, AmEx, Visa and MasterCard networks. Some local banks charge transaction fees (RMB 25 for Bank of China) but many do not; your home country bank will probably slap on a fee for each withdrawal in Beijing. Maximum single-day withdrawal limits for foreign cards vary but range RMB 3,000-5,000, with a per session limit. For a list of ATMs, see [www.move-andstay.com/beijing/guide\\_banks.asp](http://www.move-andstay.com/beijing/guide_banks.asp)

**American Express** 6505 2228; after-hours US hotline: 001 336 393 1111; Emergency card replacement (Hong Kong): 00852 2277 1088; Stolen traveler's checks: 10 800 744 0106 (toll-free)

**Western Union** (800 820 8668, China Post Beijing 6659 9111 ext 8459) [www.westernunion.com](http://www.westernunion.com)

**Visa** Certain banks, notably Bank of China and HSBC, can provide cash advances with a Visa card. Many ATMs allow Visa cardholders to withdraw money up to a daily limit.

## TRANSPORT & TRAVEL

### AIRPORT & AIRLINES

#### Beijing Capital International Airport

General enquiries 6457 1100, lost luggage 6459 9523, customer complaints 6454 1166. Terminal 1 6454 0100, Terminal 2 6459 8333, Terminal 3 6453 0030. <http://en.bcia.com.cn/>

**Air Canada** 6468 2001, 400 811 2001

**Air China** 800 810 1111, 400 810 0999

**Air France** 4008 808 808

**All Nippon Airways** 800 820 1122

**Austrian Airlines** 6464 5999

**British Airways** 400 650 0073

**China Southern Airlines** 6459 0539, 6459 6490 95539

**Continental Airlines** 400 650 6686

**Dragon Air** 400 888 6628

**Japan Airlines** 400 888 0808

**KLM Royal Dutch Airlines** 400 880 8222

**Korean Air** 400 658 8888, 8453 8137

**Lufthansa Airlines** 6468 8838

**Northwest Airlines** 400 814 0081

**Qantas Airlines** 400 888 0089

**SAS** 8527 6100

**Shanghai Airlines** 800 820 1018,

**Singapore Airlines** 6505 2233

**Swiss Air** 8454 0180

**Thai International** 8515 0088

**United Airlines** 800 810 8282

### TRAINS & RAILWAY STATIONS

Train tickets go on sale ten days in advance of departure at train stations and ticket agencies but are available to travel agents a day earlier. Round-trip tickets for trains starting from and terminating in Beijing can now be purchased 12 days before the return date. In addition, tickets for the Beijing-Hong Kong train can be bought up to 20 days ahead of departure.

To book a ticket for pick up at agency near you, call 9510 5105. You can also order a ticket on [www.51piao.com/train](http://www.51piao.com/train) for pick-up or, for a RMB 10 surcharge, delivery to an address within the Fourth Ring Road.

#### Beijing Station (Beijing Huo-

chezhan) Beijing Zhan Jie, Dongcheng District. (5101 9999, Chinese) 北京站, 东城区北京站街

#### Beijing West Railway Station (Bei-

jing Xikezhan) Lianhuachi Donglu (east of Xisanhuan Lu), Fengtai District.

(5182 6253, Chinese) 北京西站, 丰台区莲花池东路

#### Beijing South Railway Station

(Beijing Nanzhan) 12 Yongdingmenwai Dajie, Chongwen District. (5186 7999) 北京南站, 崇文区永定门外大街12号

#### Beijing North Station (Beijing

Beizhan) Xizhimen, Xicheng District. (5186 6223, Chinese) 北京北站, 西城区西直门

### TAXIS

Beijing's 67,000 cabs are easy to hail, except during the rush hour peak. Drivers are generally friendly and honest, but few speak English. The flagfall rate is RMB 10, and RMB 11 after 11 pm. At press time drivers could add an additional RMB 1 to the bill to cover fuel costs. Tips are not expected.

#### Beijing Taxi Dispatching Center

They can't send a driver to your house, but will alert all taxis with GPS in the vicinity of your request for a taxi and exact location. (6837 3399)

**Beijing Yinjian Taxi Company** Call them and they will notify their drivers of your location. (96103)

#### ASM Chauffeur and Tour Services

Airport pick-up and delivery service, chauffeur service and personal guide service available. English-speaking drivers. Pricing on website. (5166 1575) [www.chauffeurasia.com](http://www.chauffeurasia.com)

**Beijing Limo** Airport pickup, corporate events and sightseeing. Choose from stretch limos, buses and vans, all with bilingual drivers. [www.beijinglimo.com/english](http://www.beijinglimo.com/english)

### TOUR COMPANIES

**Beijing Citybus Tours** See all of Beijing's major sights in a three-hour bus tour. Call 6512 2032 or 400 650 0760 for information. [www.citybustour.com](http://www.citybustour.com)

## PASSPORTS & VISAS

### VISA APPLICATIONS/EXTENSIONS

**Exit & Entry Administration of the Public Security Bureau** Mon-Sat 8.30am-4.30pm. 2 Andingmen Dongdajie (by Xiaojie Qiao), Dongcheng District. (8402 0101, 8401 5294) 北京市公安局出入境管理处, 东城区安定门东大街2号

### EMBASSIES

If your embassy has moved, or you can't find it in the list below, consult the up-to-date list of all the embassies in Beijing at [www.travelchinaguide.com/embassy/foreign/beijing](http://www.travelchinaguide.com/embassy/foreign/beijing).

All embassies except Russia's are located in Chaoyang District.

**Australia** 21 Dongzhimenwai Dajie (5140 4111) 东直门外大街21号

**Canada** 19 Dongzhimenwai Dajie. (5139 4000) 东直门外大街19号

**France** 3 Sanlitun Dongsan Jie (8532 8080) 三里屯东三街3号

**Germany** 17 Dongzhimenwai Dajie (8532 9000) 东直门外大街17号

**India** 1 Ritan Donglu (6532 1908) 日坛东路1号

**Ireland** 3 Ritan Donglu (6532 2691) 日坛东路3号

**Italy** 2 Sanlitun Dong'erjie (8532 7600) 三里屯东二街2号

**Japan** 7 Ritan Lu, Jianguomenwai (6532 2361) 建国门外日坛路7号

**Malaysia** 2 Liangmaqiao Beijie (6532 2531) 亮马桥北街2号

**Netherlands** 4 Liangmahe Nanlu (8532 0200) 亮马河南路4号

**New Zealand** 1 Ritan Lu Dongerjie (6532 7000) 日坛路东二街1号

**Pakistan** 1 Dongzhimenwai Dajie (6532 2504) 东直门外大街1号

**Philippines** 23 Xiushui Beijie (6532 1872) 秀水北街23号

**Russia** 4 Dongzhimen Beizhongjie (6532 1381) 东直门北中街4号

**Singapore** 1 Xiushui Beijie (6532 1115) 秀水北街1号

**South Africa** 5 Dongzhimenwai Dajie (6532 0171) 东直门外大街5号

**South Korea** 20 Dongfang Donglu (8531 0700) 东方东路20号

**Sweden** 3 Dongzhimenwai Dajie (6532 9790) 东直门外大街3号

**Switzerland** 3 Sanlitun Dongxuejie (8532 8888) 三里屯东五街3号

**Thailand** Embassy: 40 Guanghua Lu (6532 1749). Visa and consular section: 15/F, Bldg D, Twins Tower, Jianguomenwai Dajie (8566 4469) 大使馆, 光华路40号. 领事馆, 建国门外大街双子座大厦D座15层

**United Kingdom** Embassy: 11 Guanghua Lu (5192 4000). Visa and Consular sections: 21/F, North Tower, Kerry Centre, 1 Guanghua Lu (8529 6600) 大使馆, 光华路11号. 领事馆, 光华路1号嘉里中心北楼21层

**United States of America** 55 Anjialou Lu (entrance on Tianze Lu) (8531 3000, visas 8531 3333, visa call center 400 887 2333). 安家楼路55号 (东门在天泽路)

**Vietnam** 32 Guanghua Lu (6532 1155) 光华路32号

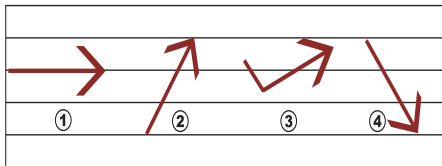


# LANGUAGE GUIDE

Introduction to tones reproduced from *Immersion Guides'* Mandarin Phrasebook, available in stores around Beijing or by delivery. To order a copy, call 5820 7700 or e-mail [distribution@immersionguides.com](mailto:distribution@immersionguides.com)

At a loss for words? These two pages are a quick-reference summary of useful phrases that might come in handy on your travels around Beijing. You won't get far without knowing some of the basics of spoken Chinese, so let's start with ...

## TONES



• Tone is variation in pitch by which a syllable can be pronounced. All Chinese pinyin are marked with one of four tones. The four tones are as follows:

1st tone – singing tone; high, flat, continuous

2nd tone – rising; similar to the intonation used to ask a question in English, like “oh?”

3rd tone – dip tone; falls and then rises

4th tone – falling tone, sharp like when you holler “boo!”

• These tones are incredibly important. If you get them wrong, people will not understand what you are saying. Many syllables in pinyin have dramatically different meanings depending on the tone. Take for instance the Pinyin construction *bao*:

First tone: **bāo** 包 wrap      Second tone: **báo** 薄 thin

Third tone: **bǎo** 保 guarantee      Fourth tone: **bào** 抱 hug

As you can see, if you're not careful, you will mistakenly tell someone that you want to hug them, when in fact, you just want to give them a guarantee.

## BASICS

|                        |                                |          |
|------------------------|--------------------------------|----------|
| Hello/hi               | <b>ní hǎo</b>                  | 你好       |
| Good-bye               | <b>zài jiàn</b>                | 再见       |
| Please                 | <b>qǐng</b>                    | 请        |
| Thank you              | <b>xiè xiè</b>                 | 谢谢       |
| Yes/no                 | <b>shì/bù shì</b>              | 是/不是     |
| Good/not good          | <b>hǎo/bu hǎo</b>              | 好/不好     |
| My name is ...         | <b>wǒ jiào...</b>              | 我叫...    |
| I'm sorry / excuse me  | <b>dùì bù qǐ</b>               | 对不起      |
| I am ...               | <b>wǒ shì ...</b>              | 我是...    |
| Can I ...?             | <b>wǒ kě-yǐ...ma?</b>          | 我可以...吗? |
| I don't understand     | <b>tīng bù dòng</b>            | 听不懂      |
| Can you speak English? | <b>nǐ huì shuō yīng-yǔ ma?</b> | 你会说英语吗?  |

## GETTING AROUND

|                |                   |        |
|----------------|-------------------|--------|
| Where is ...?  | <b>zài nǎ...?</b> | ...在哪? |
| Tiananmen      | <b>Tiānānmén</b>  | 天安门    |
| Forbidden City | <b>Gùgōng</b>     | 故宫     |
| Wangfujing     | <b>Wángfújǐng</b> | 王府井    |
| Great Wall     | <b>Chángchéng</b> | 长城     |

Temple of Heaven  
Summer Palace  
Old Summer Palace  
Lama Temple  
Silk Street Market  
Yashou Market  
The Place  
Sanlitun  
Houhai  
World Trade Center  
Financial Street  
bank  
post office  
hotel  
airport  
railway station  
subway station  
pharmacy  
hospital  
embassy  
north/south/east/west

Tiāntán 天坛  
Yíhéyuán 颐和园  
Yuánmíngyuán 圆明园  
Yōnghégōng 雍和宫  
Xiù Shuǐ Jiē 秀水街  
Yǎxiù Shìchǎng 雅秀市场  
Shìtiān Jiē 世贸天阶  
Sānlǐtún 三里屯  
Hǎihái 后海  
Guómào 国贸  
Jīnróng Jiē 金融街  
yín háng 银行  
yóu-bù 邮局  
lǚ diàn 旅店  
jī chǎng 机场  
huǒchē zhàn 火车站  
dìtiě zhàn 地铁站  
yào-diàn 药店  
yī yuàn 医院  
dà shǐ guǎn 大使馆  
běi/nán/dōng/xī 北/南/东/西

## CABS AND DIRECTIONS

|                    |                       |        |
|--------------------|-----------------------|--------|
| Take me to ...     | <b>wǒ yào qù...</b>   | 我要去... |
| Driver             | <b>shī-fu</b>         | 师傅     |
| Turn left          | <b>zuǒ-zhuǎn</b>      | 左转     |
| Turn right         | <b>yòu-zhuǎn</b>      | 右转     |
| Go straight ahead  | <b>yì-zhí zǒu</b>     | 一直走    |
| We're there        | <b>dào-le</b>         | 到了     |
| U-turn             | <b>diào-tóu</b>       | 掉头     |
| I want the receipt | <b>wǒ yào fā-piao</b> | 我要发票   |
| traffic light      | <b>hóng-lǜ-dēng</b>   | 红绿灯    |
| cross the street   | <b>guò mǎlù</b>       | 过马路    |

## SHOPPING AND BARGAINING

|                                  |                               |         |
|----------------------------------|-------------------------------|---------|
| I (don't) want this              | <b>wǒ (bù) yào zhè gè</b>     | 我(不)要这个 |
| I want one (of an item)          | <b>wǒ yào yí gè</b>           | 我要一个    |
| How much does it cost?           | <b>duō shǎo qián?</b>         | 多少钱?    |
| One yuan/kuai (unit of currency) | <b>yí yuán/yí kuài</b>        | 一元/块    |
| That's too expensive             | <b>tài guì le</b>             | 太贵了     |
| Can you lower the price?         | <b>Néng piányì yìdiǎn ma?</b> | 能便宜一点吗? |
| Where can I buy ...              | <b>zài nǎ kě-yǐ mǎi...?</b>   | 在哪可以买?  |

## EATING

|                          |                                 |          |
|--------------------------|---------------------------------|----------|
| waiter/waitress          | <b>fú-wù-yuán</b>               | 服务员      |
| menu                     | <b>cài-dān</b>                  | 菜单       |
| order food               | <b>diǎn cài</b>                 | 点菜       |
| bill/check               | <b>mǎi-dān</b>                  | 买单       |
| I am vegetarian          | <b>wǒ chī sù/wǒ bù chī ròu</b>  | 我吃素/我不吃肉 |
| I do not eat pork/beef   | <b>wǒ bù chī zhūròu/niúròu</b>  | 我不吃猪肉/牛肉 |
| I am allergic to peanuts | <b>wǒ duì huā-shēng guò-mǐn</b> | 我对花生过敏   |
| the food's good          | <b>hǎo-chī</b>                  | 好吃       |
| chopsticks               | <b>kuài-zi</b>                  | 筷子       |
| knife and fork           | <b>dāo-chā</b>                  | 刀叉       |
| spoon                    | <b>sháo-zi</b>                  | 勺子       |
| cup/glass                | <b>bēi-zi</b>                   | 杯子       |
| napkin                   | <b>cān-jīn-zhǐ</b>              | 餐巾纸      |
| rice                     | <b>mǐ-fàn</b>                   | 米饭       |
| chili sauce              | <b>là-jīāo</b>                  | 辣椒       |
| ketchup                  | <b>fān-qié-jiàng</b>            | 番茄酱      |
| vinegar                  | <b>cù</b>                       | 醋        |

USEFUL VOCABULARY

|                    |                   |         |
|--------------------|-------------------|---------|
| bag                | bāo               | 包       |
| bar                | jiǔ-bā            | 酒吧      |
| bathroom           | xǐ shǒu jiān      | 洗手间     |
| battery            | diàn-chí          | 电池      |
| charger            | chōng-diàn-qì     | 充电器     |
| book               | shū               | 书       |
| camera             | zhào-xiàng-jī     | 照相机     |
| cigarettes         | yān               | 烟       |
| credit card        | xìnyòngkǎ         | 信用卡     |
| lighter            | dǎ-huǒ-jī         | 打火机     |
| clothes            | yī-fú             | 衣服      |
| (to have a) cold   | gǎn-mào           | 感冒      |
| computer           | diàn-nǎo          | 电脑      |
| elevator           | diàn-tī           | 电梯      |
| glasses            | yǎn-jìng          | 眼镜      |
| hospital           | yī yuàn           | 医院      |
| hotel              | lǚ diàn           | 旅店      |
| hutong             | hútòng            | 胡同      |
| I'm allergic to... | wǒ duì... guò-mǐn | 我对...过敏 |
| Internet           | wǎng-luò          | 网络      |
| lighter            | dǎ-huǒ-jī         | 打火机     |
| map                | dì-tú             | 地图      |
| mobile             | shǒu-jī           | 手机      |
| name card          | míng-piàn         | 名片      |
| newspaper          | bào-zhǐ           | 报纸      |
| number             | hào-mǎ            | 号码      |
| phone              | diàn-huà          | 电话      |
| paper              | zhǐ               | 纸       |
| pen                | bǐ                | 笔       |
| photo              | zhào-piān         | 照片      |
| policeman          | jīng-chá          | 警察      |

|              |                |     |
|--------------|----------------|-----|
| purse        | qián-bāo       | 钱包  |
| raincoat     | yǔ-yī          | 雨衣  |
| umbrella     | yǔ-sǎn         | 雨伞  |
| restaurant   | fàn-diàn       | 饭店  |
| suitcase     | xiāng-zi       | 箱子  |
| sun glasses  | tài-yáng-jìng  | 太阳镜 |
| supermarket  | chāo-shì       | 超市  |
| ticket       | piào           | 票   |
| ticket booth | shòu-piào-tíng | 售票亭 |
| bathroom     | xǐ-shǒu-jiān   | 洗手间 |
| toilet paper | wèi-shēng-zhǐ  | 卫生纸 |
| top-up cards | chōng-zhí-kǎ   | 充值卡 |
| tour guide   | dǎo-yóu        | 导游  |
| watch        | shǒu-biǎo      | 手表  |

NUMBERS

|       |                   |       |
|-------|-------------------|-------|
| 0     | líng              | 零     |
| 1     | yī                | 一     |
| 2     | èr                | 二     |
| 3     | sān               | 三     |
| 4     | sì                | 四     |
| 5     | wǔ                | 五     |
| 6     | liù               | 六     |
| 7     | qī                | 七     |
| 8     | bā                | 八     |
| 9     | jiǔ               | 九     |
| 10    | shí               | 十     |
| 11    | shí-yī            | 十一    |
| 20    | èr-shí            | 二十    |
| 35    | sān-shí-wǔ        | 三十五   |
| 100   | yì-bǎi            | 一百    |
| 123   | yì-bǎi èr-shí-sān | 一百二十三 |
| 1,000 | yī-qīān           | 一千    |



**Mandarin Phrasebook**

More than just classroom Chinese.

Available in stores around Beijing  
or by delivery to your home, office, or hotel.

To order a copy, call 010 7101  
or e-mail [distribution@immersionguides.com](mailto:distribution@immersionguides.com)  
[www.immersionguides.com](http://www.immersionguides.com)



**Commercial and service classifieds** cost RMB 300 for the first 30 words, and RMB 10 for each additional word. To submit a classified ad: 1) e-mail: phoebeli@truerun.com; 2) submit your ad directly online at [www.thebeijinger.com](http://www.thebeijinger.com); Free ads will be placed on a space-available basis and at the discretion of the editor. For more information on how to place a classified advertisement in *agenda* call Phoebe: 5820 7700 ext 822

## ACCOMMODATION AVAILABLE

### Beijing Service Apartment for Rent Daily/Monthly/Yearly!

Locate Near Dongzhimen Subway, Sanlitun. Opposite Australia, Canada Embassy. New, Luxurious Decoration, Full Furniture, LCD TV, Wireless ADSL Internet, Fridge, Microwave, 24 hours Hot Water, Security, Cleaning Service. From CNY 300/night for Studio in Harbor City; CNY 360/night for studio with modern kitchen in Seasons Park, include utility cost. Also have studio, 1 - 4 bed room apartments in Seasons Park and other compounds in Beijing, from CNY 3,900/month for studio and CNY 5,900/month for 1 bedroom apartment (1 Year Contract). Email [subletcn@gmail.com](mailto:subletcn@gmail.com) or Phone (0086-139-0101-8181) for Discount Rate! Website: <http://www.sublet.cn>

## SERVICES - CAR RENTAL & DRIVER

### Welcome join the expatcar motor club membership

AAA expatcar saves you from the worry and Expense of breaking down anywhere, anytime. Mechanical first aid  
Change of flat tire  
Battery boost  
Towing & extrication service  
New car sales  
Used car sales  
Long-short term leasing  
Contact: [service@expatcar.com](mailto:service@expatcar.com)  
Tel: 81523060

### AAA expatcar [www.expatcar.com](http://www.expatcar.com)

The #1 solution for enjoyable driving in China  
New car sales  
Used car sales  
Leasing options  
Car service  
Driver license  
Car insurance  
Contact: [sales@expatcar.com](mailto:sales@expatcar.com)  
Tel: 81523060

Have  
a classified ad  
to list?  
E-mail [phoebeli@truerun.com](mailto:phoebeli@truerun.com)

## LANGUAGE TRAINING

### 1040 US & CHINA TAX SERVICES

Licensed & personalized US and China individual income tax specialists with over 15 years experiences. For tax return preparation and consultation services, please contact us: 1040 Consulting Service Co., Ltd. / W: [www.1040-cn.com](http://www.1040-cn.com) / E: [contact@1040-cn.com](mailto:contact@1040-cn.com) / M: 139-1131-4957 / P: (86 10) 5923-1099

**At 'I Learn China',** we want to see you putting your new Mandarin skills into practice - with our dedicated staff and tailor made programs, you could be speaking the local lingo in no time. Join our Immersion Program, 3 -10 weeks of intensive study sessions from Pre-Beginner to Advanced courses. Register before the 20th June to receive 30% discount. Hotline: 010 6409 6582 Email: [info@ilearnchina.com](mailto:info@ilearnchina.com) [www.ilearnchina.com](http://www.ilearnchina.com)

### The EX-PATS Mandarin School

A subsidiary company of EX-PATS Life Group,

- provides year round programs for local expatriates students.
- Super locations near Liangmaqiao Subway Station.
- Professional and experienced teachers.
- Group and Private class for all level.
- Private class starts at any time.

EXPATS Life Group also serves with reliable housemaid, car leasing, Visa help, English-speaking driver, driving license, vehicle registration service. Tel: 64668379 or 13501237792 Add: Room 803, Oriental Place, Lufthansa Area [ada.han@expatslife.com](mailto:ada.han@expatslife.com) [www.expatslife.com](http://www.expatslife.com)

**Experienced tutor** with strong background and a proven track record is committed to delivering high quality classes to students of all levels and areas. Able to select appropriate materials; expand your knowledge of everything about China; customize long-term studying plan or intensive survival, exam programs. Can also work with groups. Flexible schedule and location. RMB80. Chad Jiang: 136-7113-1173

## JOBS OFFERED

### Professional hair stylists are needed:

Yadia is an international hair salon, the company is currently seeking creative, professional native-speaking hair stylists for its flagship store located in Shang Du Soho. Required: Rich hair-style experience is essential and working experience in

international company is advantageous. Excellent Customer service skills. If you are interested and qualified, please call 5900 5020 or email your CV to [hadty0203@yahoo.com.cn](mailto:hadty0203@yahoo.com.cn).

**Mag Translation** has a professional team of translators and interpreters for nearly thirty languages. Services include: Document Translation / Interpretation / Certified Translation (officially recognized stamps) / Business Liaison / Voice Over / Transcription. Quality and Punctuality are continuously guaranteed! Contact: [magtranslation@gmail.com](mailto:magtranslation@gmail.com), 86-10-51663597, 86-13811295972

**Seven Seas Worldwide offers unbeatable** prices to send your personal belongings or excess baggage worldwide. Visit: [www.sevenseasworldwide.com](http://www.sevenseasworldwide.com) to try our FREE 30 seconds online quote. So you can make a decision fast and save time & money. Tel: 400 881 6698. Email: [CHNINFO@sevenseasworldwide.com](mailto:CHNINFO@sevenseasworldwide.com)

## GENERAL

**Lily's Antiques** Specializing in high-class antique furniture (mainly from northern China, in walnut and Elmwood) and custom-made furniture, for the local market. Also wholesale for antique and newly made furniture. Excellent service for international transportation of furniture. Furthermore a wide selection of accessories is offered. 1) Daily 8.30am-6pm. Gaobeidian Showroom, 6 Gaobeidian Furniture Street, Chaoyang District. Contact Lily Quan (6572 9746, 138 0139 6309), (8579 2458, [www.lilys-antiques.com](http://www.lilys-antiques.com)); 2) Visit by Appointment, Factory and Warehouse Address, Baimiao industry area, Songzhuang town, Tongzhou District. Contact Lily Quan (6572 9746, 138 0139 6309) (138 0139 6309) 华伦古典家具, 1) 朝阳区高碑店家具一条街69号; 2) 通州区工厂地址, 通州区宋庄镇白庙村工业大院

### The best Tattoo studio in China

Creation Tattoo is the first professional body art studio in Beijing. We provide service below: Tattoo, Personal body art design, piercing, microdermal, Tattoo removal. We has created the perfect platform to satisfy the needs for body art with professional equipments and personnel. welcome to custom. Add: 4309, Bldg 4, Jianwai Soho, 39 Dongsanhuan Zhonglu, Chaoyang District Tel: 010-58691886 Website: [www.tianxiciqing.com](http://www.tianxiciqing.com) 地址: 北京市朝阳区建外SOHO东区4楼4309号